

Product Data Sheet / Produkt Datenblatt

Part Number	5094.99.0030.003	Teilenummer
Description	SMT-Schalter SMT-Switch	Beschreibung
		
Design according to		Ausführung nach

Electrical characteristics / Elektrische Eigenschaften

		colored value means: under validation		counter part: K-2571-01 // K-2602-01-02 K-2641-01	
		Value/Wert		Unit/ Einheit	Remarks: Attention electrical values strongly depending on layout
Impedance (MIL-C-39012B)		50		[Ω]	Impedanz (MIL-C-39012B)
Operating frequency up to		4		[GHz]	Betriebsfrequenz bis zu
Return loss <small>measured with cable typ.</small>		unswitched	switched		gem. mit Kabel Typ: Rückflusdämpfung
	1 GHz	<24	<21	[dB]	
	2 GHz	<19	<18	[dB]	
	3 GHz	<15	<14	[dB]	
	4 GHz	<14	<12	[dB]	
Insertion loss					Einfügedämpfung
	1 GHz	<0,35	<0,5	[dB]	
	2 GHz	<0,45	<0,75	[dB]	
	3 GHz	<0,55	<1,35	[dB]	
Isolation					Isolierung
	1 GHz	n/a	> 33	[dB]	
	2 GHz	n/a	> 27	[dB]	
	3 GHz	n/a	> 24	[dB]	
Contact resistance					Kontakt-Widerstand
	Centre contact	<80	<100	[mΩ]	
	Outer contact	<50	<25	[mΩ]	
Insulation resistance	after SMT-process / conditioning	>0,2		[GΩ]	Isolationswiderstand
Rated voltage		50		[V] DC	Nennspannung
Proof voltage		100		[V] eff	Prüfspannung

Mechanical characteristics / Mechanische Eigenschaften

		Value/ Wert	Unit/ Einheit	
Engagement force	after soldering process	m10	[N]	Steckkraft
Mating cycles	with 4449.93.8914.1''	~ 5000		Steckzyklen
Water resistance		IP67		Wasserbeständigkeit

Product Data Sheet / Produkt Datenblatt

Part Number	5094.99.0030.003	Teilenummer
Description	SMT-Schalter SMT-Switch	Beschreibung

Material & plating / Material & Oberfläche

	Material/Material	Plating/Oberflächen	
Outer contact	Brass	Ni + 0,2µm Au	Außenkontakt
Centre contact	Bronze	Ni + 0,2µm Au	Innenkontakt
Spring	Copper berylium	Ni + 0,5µm Au	Feder
Insulator	PPA		Isolator
Insulator	PEEK		Isolator
	-		

Environmental influences

Umwelteinflüsse

Temperature range	-40°C up to +85°C	Temperaturbereich
Vibration	MIL-STD-202 Meth. 204, cond.B	Vibration
Corrosion resistance	MIL-STD-202 Meth. 101, cond.C	Korrosionsbeständigkeit
Climatic categorie	IEC 60068 40/85/21	Klimakategorie
Shock	MIL-STD-202 Meth. 213, cond. G	Schock
Max. soldering temp. (PCB connectors)	IEC 61760-1, +260°C for 10 sec.	Max. Löttemp. (Leiterplattenanschlüsse)
RoHS	compliant	RoHS
Solder profile		Lötprofil

Notes

Aufzeichnungen

Product Data Sheet / Produkt Datenblatt

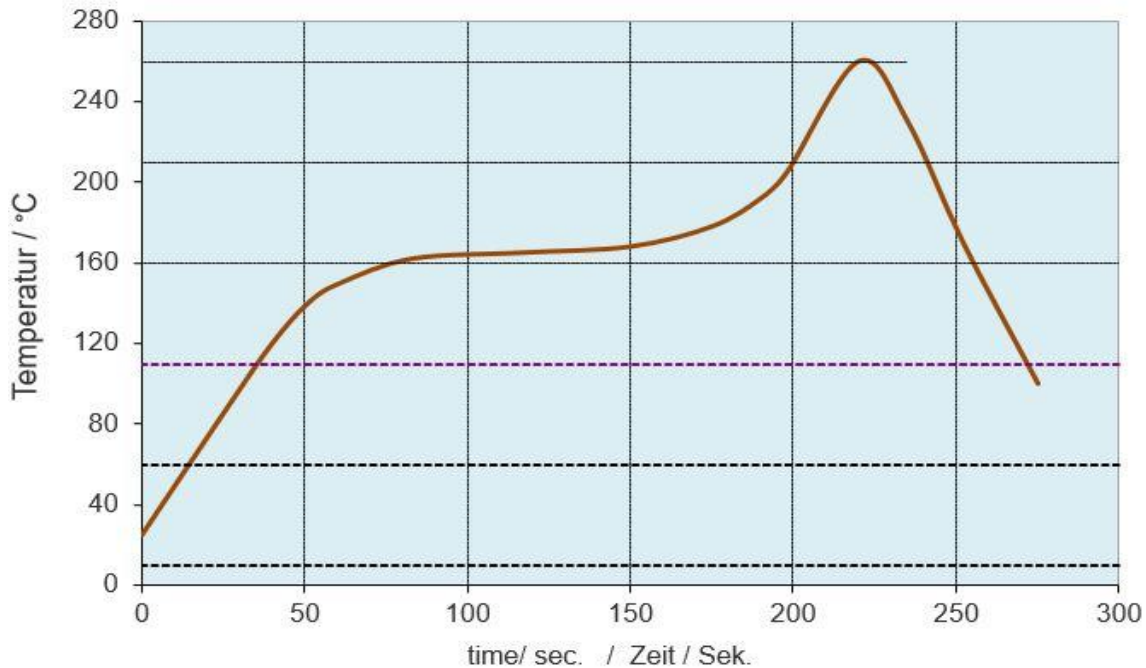
Part Number	5094.99.0030.003	Teilenummer
Description	SMT-Schalter SMT-Switch	Beschreibung

Soldering process / Lötprozess

Soldering methode / Lötmethode: THR / Reflow

**Recommended reflow soldering profil /
 Empfohlenes reflow Lötprofil:**

Parameter	Reference	Specification
Max. Temperature (lead free soldering) Max. Temperatur (bleifreies Lötten)	C°	260



Product Data Sheet / Produkt Datenblatt

Part Number

5094.99.0030.003

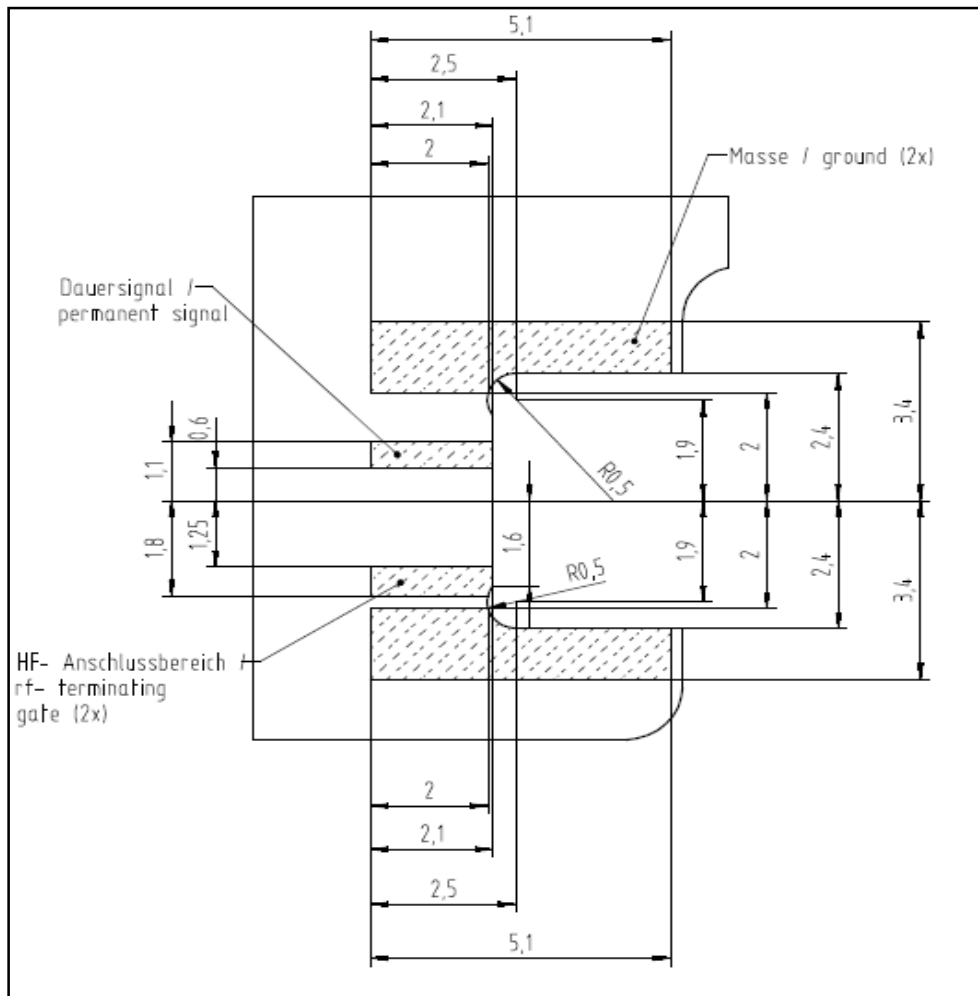
Teilenummer

Description

**SMT-Schalter
SMT-Switch**

Beschreibung

PCB -Layout



SMD - solderability acc. IPC/JEDEC J-STD-020E -Pb-Free Assembly