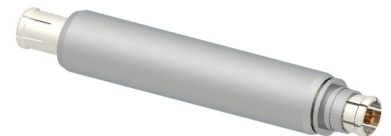


Product data sheet

IMS CONNECTOR SYSTEMS GmbH
 Obere Hauptstrasse 30
 D-79843 Löffingen
 Postfach 1141
 D-79840 Löffingen

Tel (+49) 7654 901-0
 Fax (+49) 7654 901-199
 Net: www.imscs.com
 E-mail: sales@imscs.com

Part Number: 5016.PSMP.9910.005		Revision: c
Description: PSMP- Adapter (jack - jack)		Date: 15.10.2012
		Signature: R.Schwär
		Page: 1 of 2
Design according to:	Power-SMP Spec. 119K000-000	
Electrical characteristics:	colored value means: still under test target value	
	Value	Unit
Impedance (MIL-C- 39012B)	50	[Ω]
Operating frequency up to	...10	[GHz]
Return loss measured with cable typ:	-	-
1 GHz	35	[dB]
2 GHz	34	[dB]
4 GHz	27	[dB]
6 GHz	27	[dB]
3rd. Order PIM product 2x43dBm	160	[dB]
Insulation resistance	≥ 5	[GΩ]
Insertion loss	$\leq 0.05 \times \sqrt{f \text{ (GHz)}}$	[dB]
Contact resistance		
Centre contact	≤ 3	[mΩ]
Outer contact	≤ 2	[mΩ]
Contact current max. (DC)	max. 1,2	[A]
Operating voltage	480	[V]
Proof voltage	1000	[V]
Power handling (at 20°C, sea level, VSWR 1.0)	≤ 200	[W]
		Picture
		Remarks
		at 910MHz / at 1870 MHz
		at 2,2 GHz
Mechanical characteristics:		
	Value	Unit
Engagement force "smooth bore"	≤ 10	[N]
"limited detent"	≤ 45	[N]
"full detent"	≤ 68	[N]
Disengagement force "smooth bore"	≥ 2,2	[N]
"limited detent"	≥ 15	[N]
"full detent"	≥ 25	[N]
Mating cycles mating part is "smooth bore"	≥ 1000	
mating part is "limited detent"	≥ 100	
mating part is "full detent"	≥ 100	
Center contact captivation	≥ 7	[N]
Permissible angular misalignment	2°	



Product data sheet

IMS CONNECTOR SYSTEMS GmbH
 Obere Hauptstrasse 30
 D-79843 Löffingen
 Postfach 1141
 D-79840 Löffingen

Tel (+49) 7654 901-0
 Fax (+49) 7654 901-199
 Net: www.imscs.com
 E-mail: sales@imscs.com

Part Number: 5016.PSMP.9910.005	Revision: c
Description: PSMP- Adapter (jack - jack)	Date: 15.10.2012
	Signature: R.Schwär
	Page: 2 of 2

Material & plating:	RoHS (2002/95/EC) conform	
	Material	Plating
Outer contact (Spring basket)	Copper beryllium	3-5µm Ag + flash CuZnSn
Centre contact	Copper beryllium	Ni-P + 0,15µm Au
Connector body	Brass	Cu + Ni + 3-5µm Sn
Insulator	PTFE	-

Environmental influences:		Remarks
Operating temperature range	-65°C up to +165°C Standard	
Climatic sequence: 1. Dry heat 2. Damp heat, cyclic, 1 cycle 3. Cold 4. Damp heat, cyclic, 6 cycles	IEC 60068-2-61 IEC 60068-2-2-Ba IEC 60068-2-30-Db IEC 60068-2-1-Aa IEC 60068-2-30-Db	
Solder profile:	-	

Notes:

Update historie			
Rev.	Date	Alteration	Signature
a	10.01.2013	Revised	R.Schwär
b	20.02.2013	Revised	R.Schwär
c	15.03.2013	Revised	R.Schwär