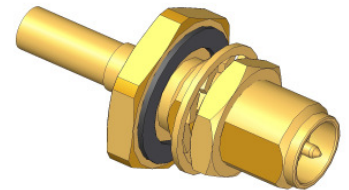


# Product data sheet

IMS CONNECTOR SYSTEMS GmbH  
 Obere Hauptstrasse 30  
 D-79843 Löffingen  
 Postfach 1141  
 D-79840 Löffingen

Tel (+49) 7654 901-0  
 Fax (+49) 7654 901-199  
 Net: www.imscs.com  
 E-mail: sales@imscs.com

<b>Part Number: 4401.42.1410.043</b> <b>Description: SMA Cable mount plug rev. pol.</b>		Revision: - Date: <b>01.08.2011</b> Signature: <b>Pözl N.</b> Page: 1 of 2	
<b>Design according to:</b>		<b>SMA reverse polarity</b>	<b>No IEC Standard</b>
<b>Electrical characteristics:</b>		colored value means: still under test target value	Picture
		<b>Value</b>	<b>Unit</b>
Impedance ( MIL-C- 39012B) Operating frequency up to		<b>50</b> <b>10</b>	[Ω] [GHz]
Return loss measured with cable typ:		<b>Hirose U.FL-LP-066</b>	<b>Hirose</b>
1 GHz 2 GHz 4 GHz 6 GHz 10 GHz		<b>&gt;31</b> <b>&gt;29</b> <b>&gt;23</b> <b>&gt;18</b> <b>&gt;13</b>	[dB] [dB] [dB] [dB] [dB]
3rd. Order PIM product 2x43dBm Insulation resistance Contact resistance Centre contact Outer contact Contact current max. (DC) Operating voltage Proof voltage		/ <b>&gt;10</b> <b>≤3</b> <b>≤2</b> <b>0,27</b> <b>≤250</b> <b>500</b>	[dBc] [GΩ] [mΩ] [mΩ] [A] [V] [V]
			Remarks at 910MHz / at 1870 MHz
<b>Mechanical characteristics:</b>		<b>Value</b>	<b>Unit</b>
Engagement force Separating force		- -	[N] [N]
Mating cycles		<b>&gt; 500</b>	



# Product data sheet

IMS CONNECTOR SYSTEMS GmbH  
 Obere Hauptstrasse 30  
 D-79843 Löffingen  
 Postfach 1141  
 D-79840 Löffingen

Tel (+49) 7654 901-0  
 Fax (+49) 7654 901-199  
 Net: www.imscs.com  
 E-mail: sales@imscs.com

<b>Part Number:</b> 4401.42.1410.043	Revision: -
<b>Description:</b> SMA Cable mount plug rev. pol.	Date: 01.08.2011
	Signature: Pölz N.
	Page: 2 of 2

<u>Material &amp; plating:</u>	RoHS (2002/95/EC) conform	
	Material	Plating
Outer contact	Brass	Ni-P + 0,15µm Au
Centre contact	Brass	Ni + Ni-P + 0,15µm Au
Crimp ferrule	Brass	Ni-P + 0,15µm Au
Other metal parts	Brass / Bronze	Cu + Ni + 0,2µm Au
Insulator	PTFE	-
Gasket	Silicon rubber	-

<u>Environmental influences:</u>		Remarks
Operating temperature range	-55°C up to +125°C Standard	
Climatic sequence: 1. Dry heat 2. Damp heat, cyclic, 1 cycle 3. Cold 4. Damp heat, cyclic, 6 cycles	IEC 60068-2-61 IEC 60068-2-2-Ba IEC 60068-2-30-Db IEC 60068-2-1-Aa IEC 60068-2-30-Db	
Solder profile:	-	

**Notes:**

<u>Update historie</u>			
Rev.	Date	Alteration	Signature