

Product data sheet

Part Number: 3343.SMP.9910.001

Revision: **a**
 Date: **24.01.03**
 Signature: **um**
 Page: 1 of 2

Description: adapter (jack - jack)

Design according to:

MIL-STD-348A

Electrical characteristics

colored value means: still
under test target value

Value

Unit

Picture

Impedance (MIL-C- 39012B)

50

[Ohm]

Operating frequency up to

10

[GHz]

Return loss

1 GHz

31

[dB]

2 GHz

28

[dB]

4 GHz

24

[dB]

6 GHz

19

[dB]

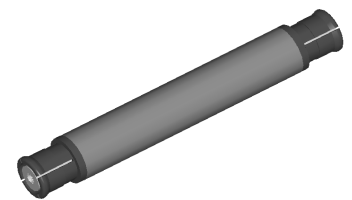
10 GHz

15

[dB]

18 GHz

[dB]



Remarks

3rd. Order PIM product 2x40dBm

/

[dBc]

Insulation resistance

5

[GOhm]

Contact resistance

Centre contact

<6

[mOhm]

Outer contact

<2

[mOhm]

Contact current max. (DC)

1,2

[A]

Operating voltage

335

[V]

Proof voltage

500

[V]

at 910MHz / at 1870 MHz

Mechanical characteristics

Value

Unit

Remarks

Engagement force "smooth bore"

≤ 9,0

[N]

"limited detend"

≤ 45

[N]

Separating force "smooth bore"

≥ 2,2

[N]

"limited detend"

≥ 9,0

[N]

Mating cycles "smooth bore"

>1000

"limited detend"

> 500

Product data sheet

Part Number: 3343.SMP.9910.001	Revision: a
Description: adapter (jack - jack)	Date: 24.01.03
	Signature: um
	Page: 2 of 2

<u>Material & plating</u>	Material	Plating
Housing	brass	Cu + Ni + 0,2µm Au
Centre contact	copper beryllium	Cu + Ni + 1,3µm Au
Spring basket	copper beryllium	Cu + Ni + 0,8µm Au
Insulator	PTFE	-
Crimp ferrule	-	-
Gasket	-	-

<u>Environmental influences</u>	Standard	Remarks
Climatic sequence: 1. Dry heat 2. Damp heat, cyclic, 1 cycle 3. Cold 4. Damp heat, cyclic, 6 cycles	IEC 60068-2-61 IEC 60068-2-2-Ba IEC 60068-2-30-Db IEC 60068-2-1-Aa IEC 60068-2-30-Db	

Notes

PCB distance 27,2mm

Update historie

Rev.	date	Signature
a	12.03.03	um