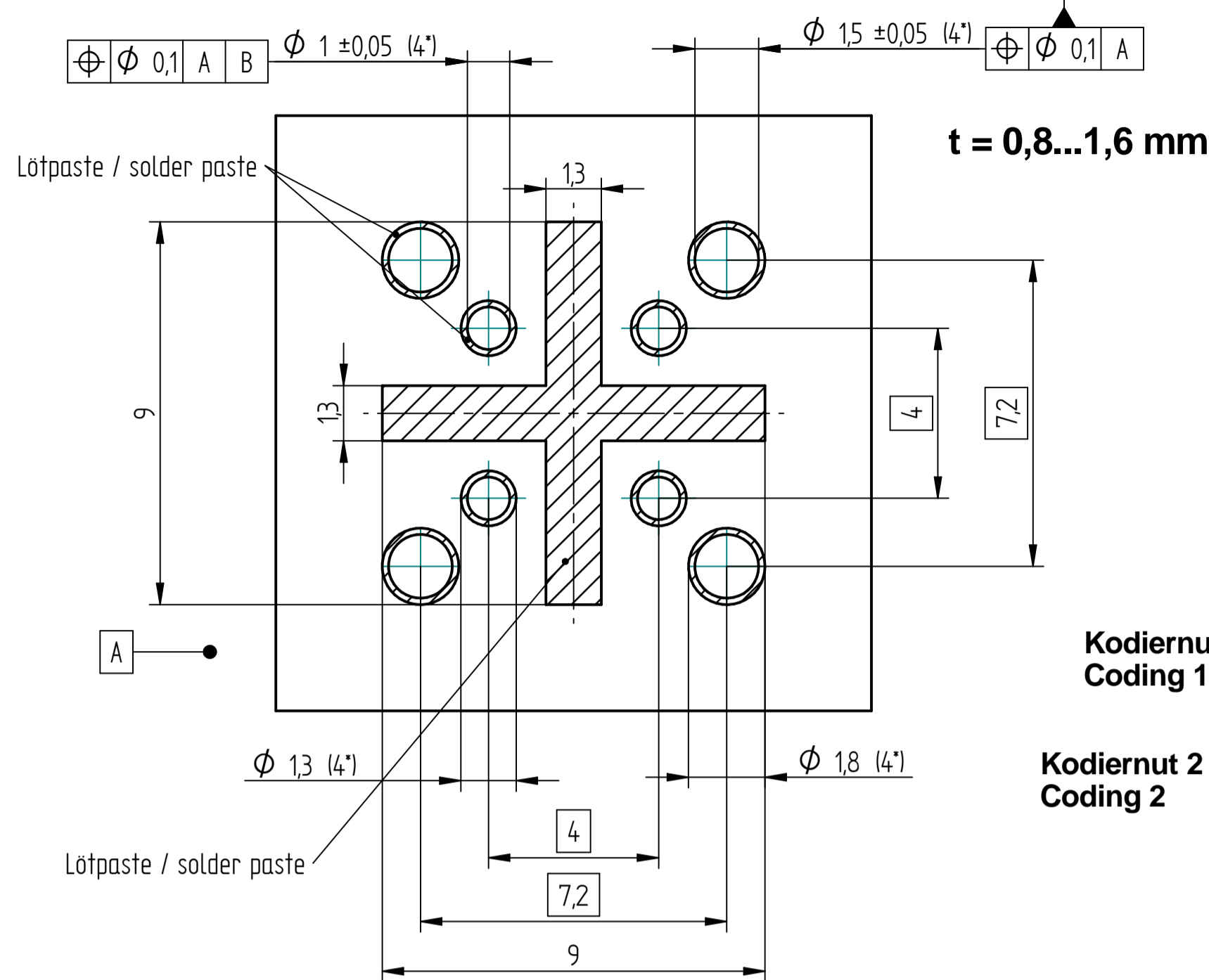
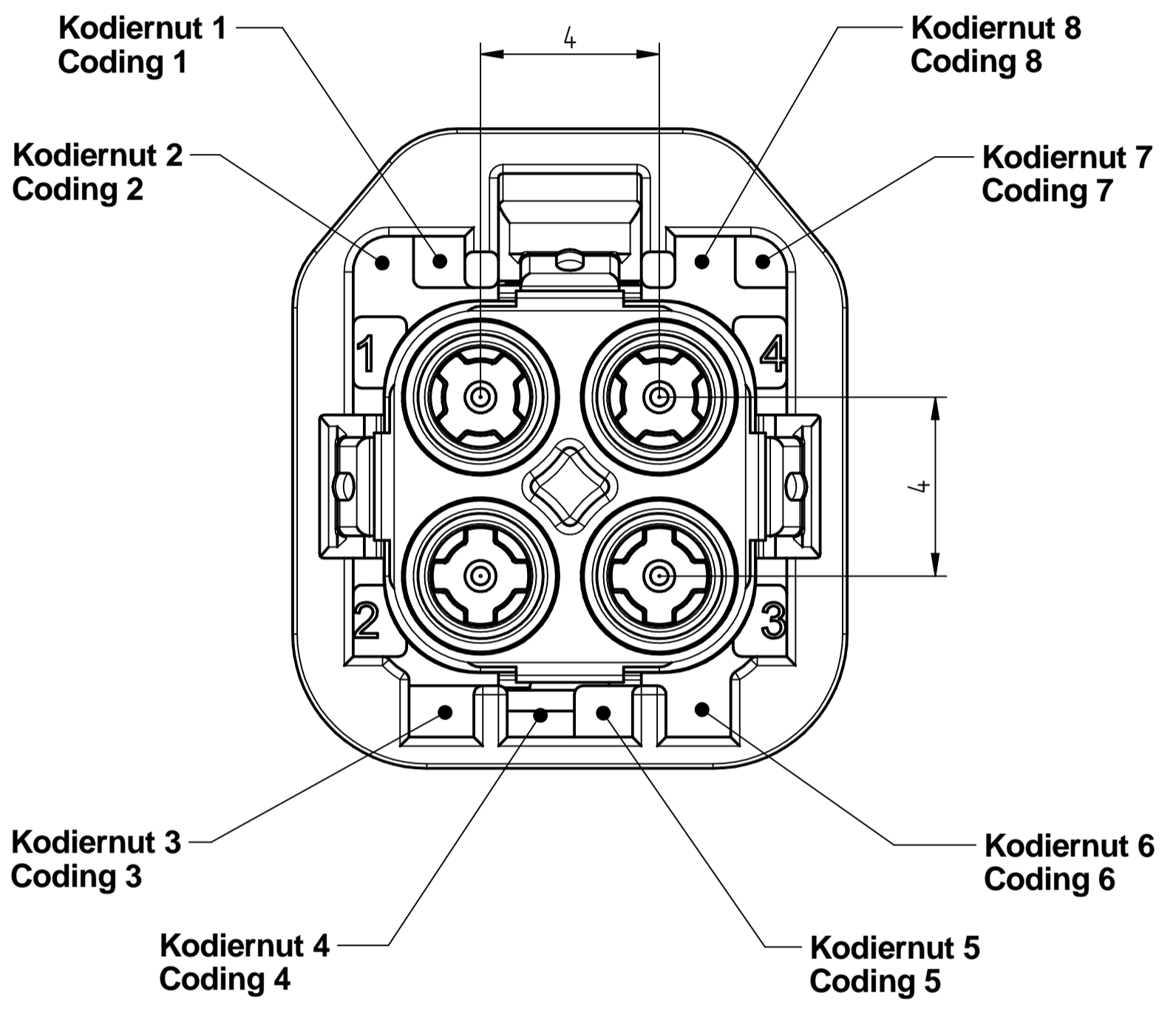


Revision history				
Change ID	Rev.	Alteration	Date	Name
224103	A01	Private Labeling away	17.03.22	rschwaer

Empfohlenes Leiterplattenlayout - (nur zur Information)
Recommended PCB Footprint - (only for information)



t = 0,8...1,6 mm

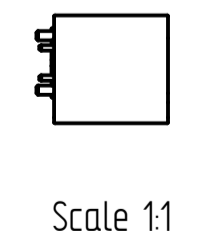
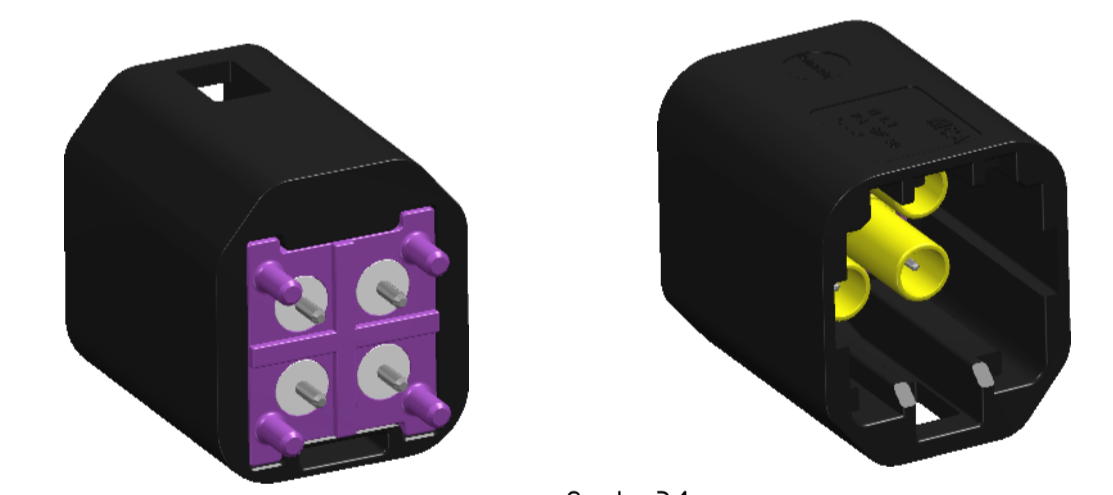
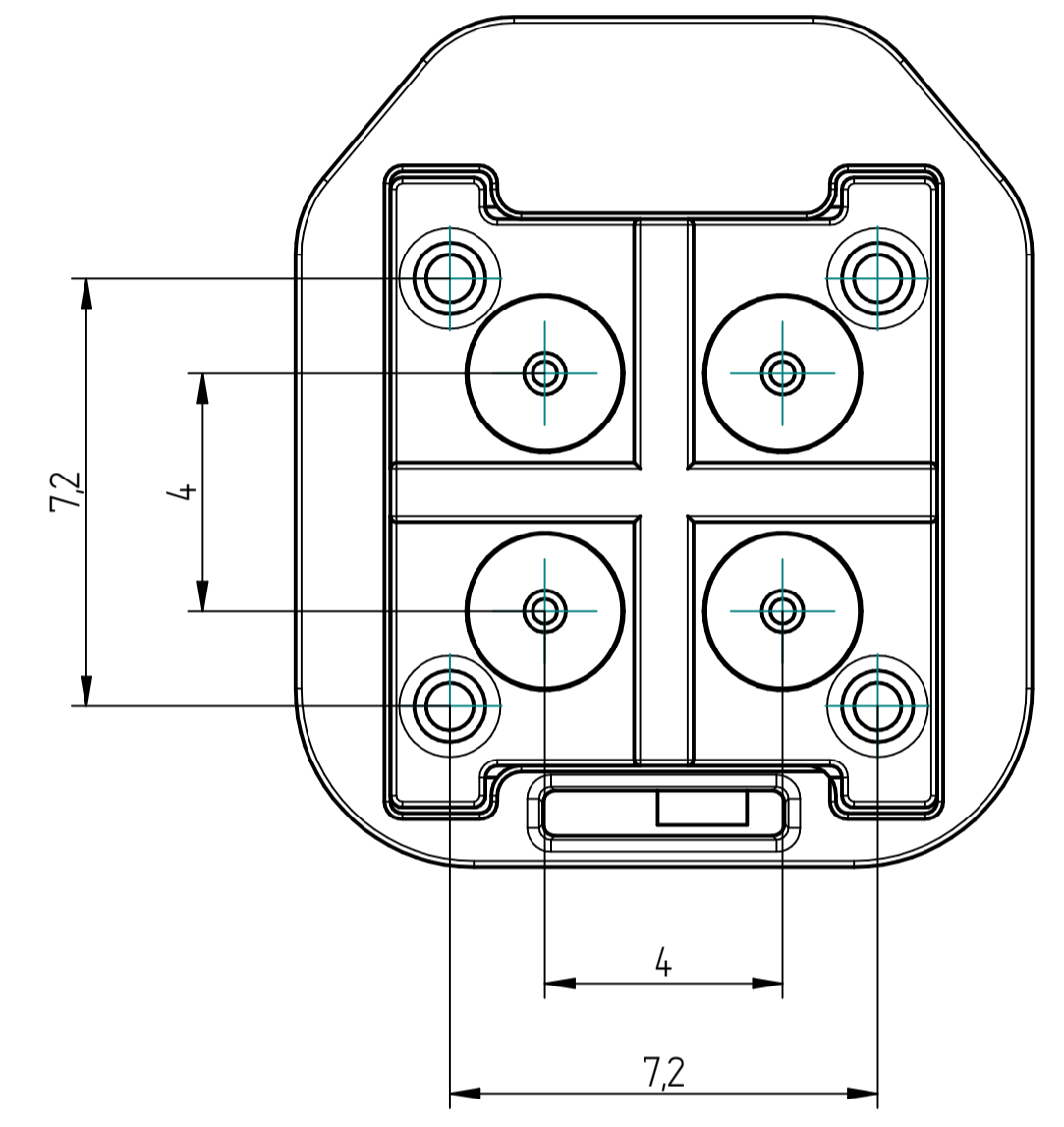
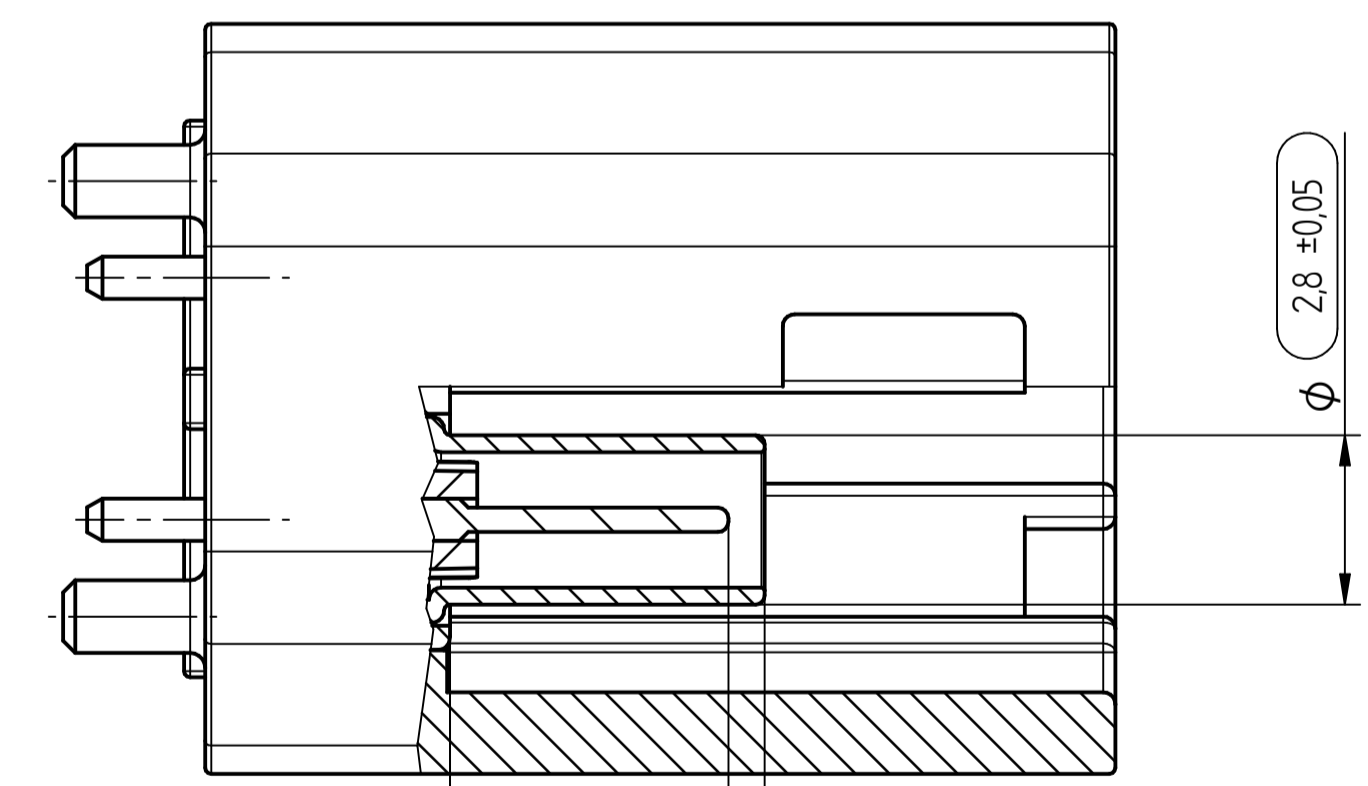
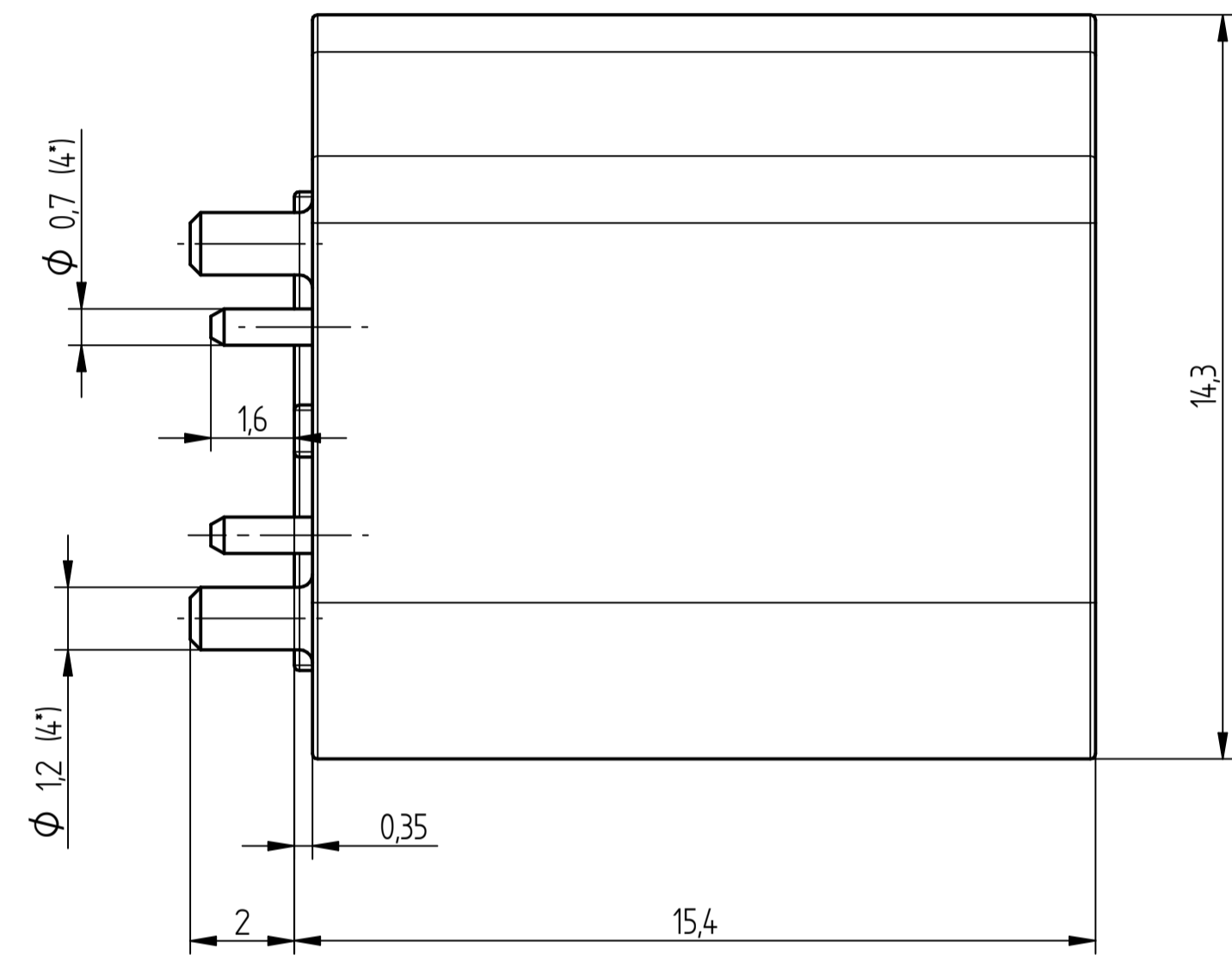
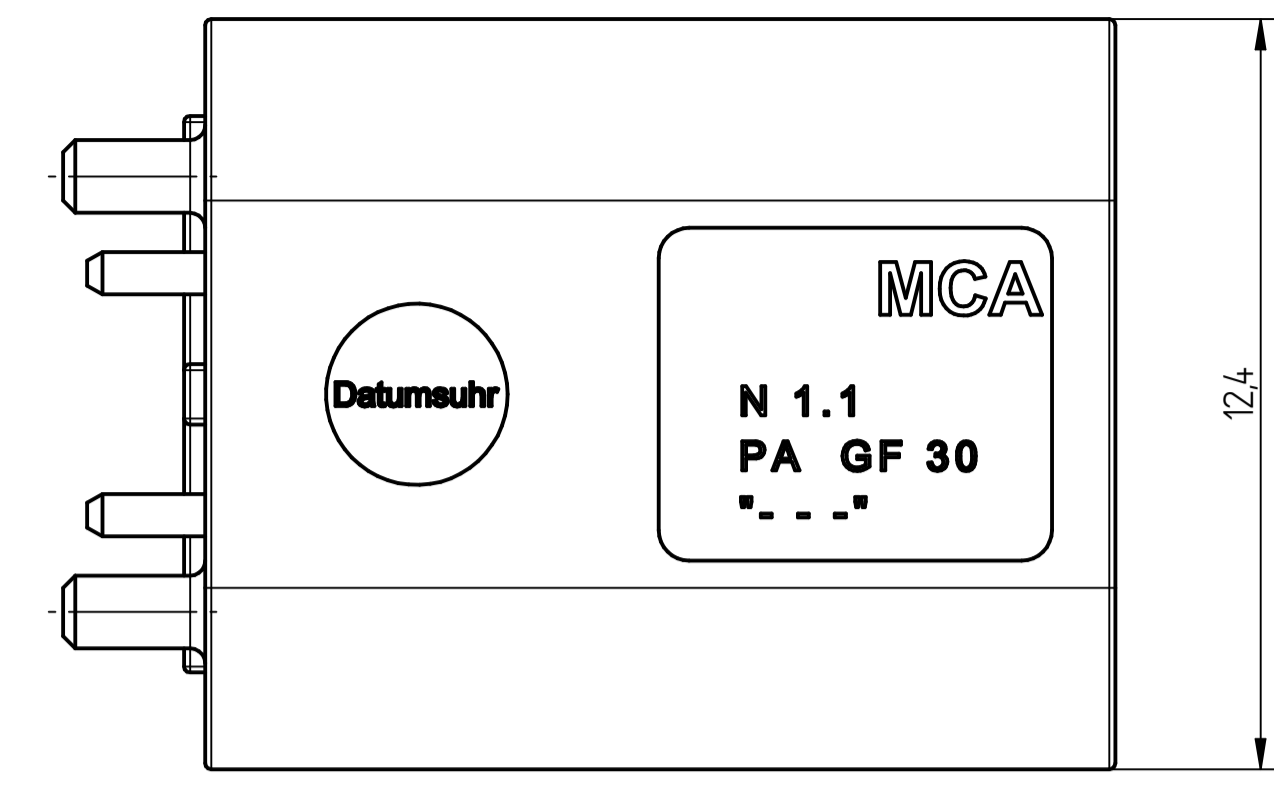


Kodierung A ist dargestellt
Coding A is shown

Kodierungsvariante X muss in Zeichnungsnummer festgelegt werden, wenn eine Bestellung ausgelöst wird.
Coding Type X have to be stated within the drawing number, when an order is placed

Kodierungsvariante Coding Type "X"	Kodiernut 1 Coding 1	Kodiernut 2 Coding 2	Kodiernut 3 Coding 3	Kodiernut 4 Coding 4	Kodiernut 5 Coding 5	Kodiernut 6 Coding 6	Kodiernut 7 Coding 7	Kodiernut 8 Coding 8	Farbe color	ähnlich RAL similar RAL	
	A	geschlossen closed	offen open	geschlossen closed	offen open	geschlossen closed	offen open	geschlossen closed	offen open	tiefschwarz jet black	9005
	B	offen open	geschlossen closed	offen open	geschlossen closed	offen open	geschlossen closed	offen open	geschlossen closed	reinweiss pure white	9010
	C	geschlossen closed	offen open	geschlossen closed	offen open	offen open	geschlossen closed	offen open	geschlossen closed	lichtblau light blue	5012
	D	offen open	geschlossen closed	offen open	geschlossen closed	geschlossen closed	offen open	geschlossen closed	offen open	bordeauxviolett claret violet	4004
	E	offen open	offen open	geschlossen closed	geschlossen closed	offen open	offen open	geschlossen closed	geschlossen closed	maigrün may green	6017
	F	geschlossen closed	geschlossen closed	offen open	offen open	geschlossen closed	geschlossen closed	offen open	offen open	nussbraun nut brown	8011
	Z	offen open	offen open	offen open	offen open	offen open	offen open	offen open	offen open	wasserblau waterblue	5021

		Variable Z = Plating /surface code			
Part	Material	1	4	7	9
Housing	diecast			Sn	
Plastic Housing	PA GF-30				
Centre Pin contact side	brass			Ag	
Centre Pin pcb side	brass			Ag	
Outer Contact contact side	brass			Sn	
Outer Contact pcb side	diecast			Sn	
Insulator	LCP				



Projection - ISO 5456	Unit system - Metric	General tolerance	Note	Document type
	ALL dim. in [mm]	ISO 2768 mH		Acceptance drawing
Created by mnadri	Approved by	Title MCA PCB mount plug 4-pole	Supplementary title MCA PCB Anbaustecker 4-Pol	Drawing number 5370 MCA1X10.00Z
Rev. A 01	Date of issue 16.03.2018	Lang. EN	Scale 8:1	Sheet 1/1