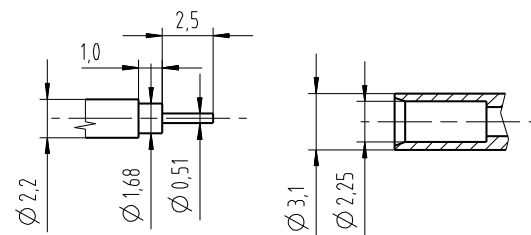
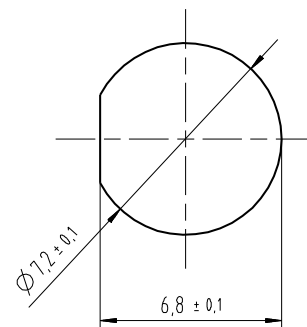


Colour code X	C	D	G
Colour	Capri blue	Bordeaux violet	Silver grey
RAL-No.	5019	4004	7001

Kabelzuschnitt / Stripping dimension  
Semi-Rigid UT 85 ; RG 405 /U



Montagedurchbruch /  
Panel cut out



SCALE 1:1

SCALE 2:1

				general tolerance ISO 2768 mH		scale: <b>5:1</b>	
				date 28.05.13 name Schwaer		Assembly instruction: M-187 Stripping dimension:	
design d Revised 20.09.13 RSch				checked		<b>QLS(f)-Kabelbuchse</b>	
design c Revised 31.07.13 RSch				Norm 059849		<b>QLS(f)-Cable mount jack</b>	
design b Colour code add. 04.07.13 RSch						<b>5091.QLS.2X12.06'</b>	
design a Change acc. sim. 05.06.13 RSch							
nr.	rev.	alteration	date	name			Rev. <b>d</b>

Colour code