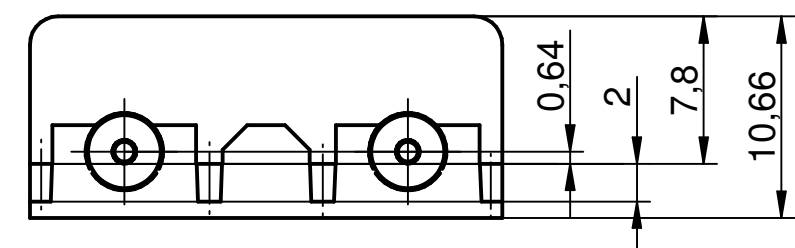
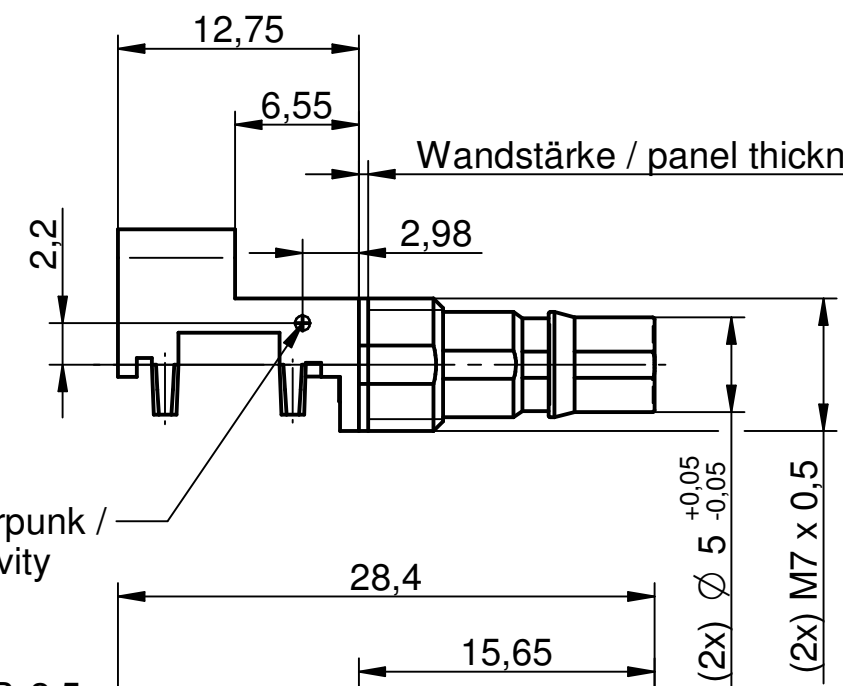
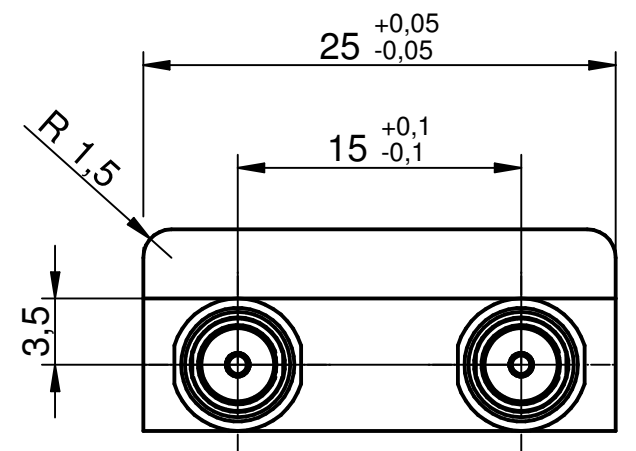
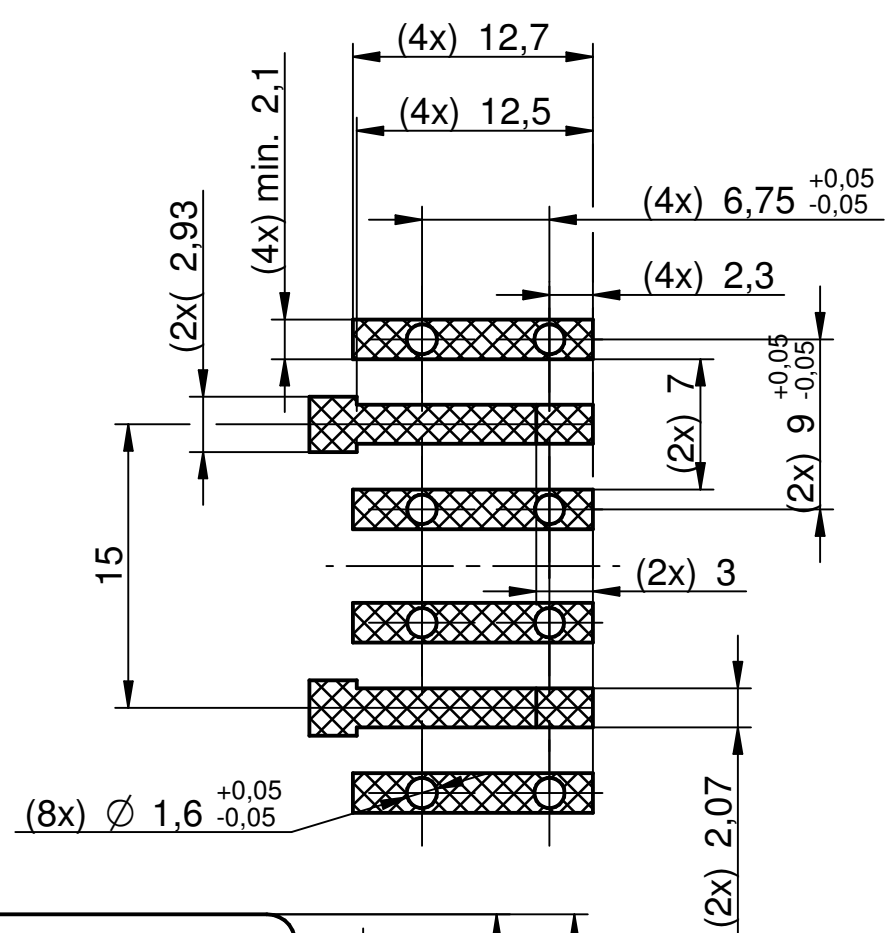


SMT Lötflächen (Empfohlen) /
SMT PCB Layout (Recommended)



Masseschwerpunkt /
Centre of gravity

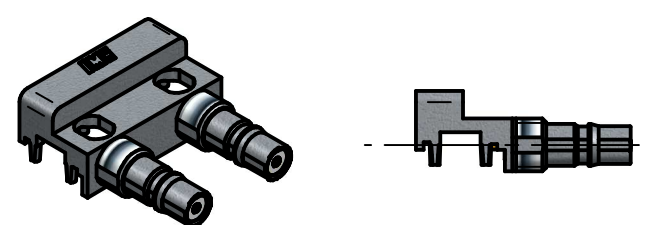
Ansaugfläche /
vacuum area

Verpackungsdaten:

Dates of packing:

Blistergurt: AGK-4292
Stk/ Gurt: 160
Stk/ m: 27,7
Vorlauf: 0,3 m
Nachlauf: 0,29 m
Gurtlänge: ca. 6,35 m
Spulen D: 380mm

Tape and reel: AGK-4292
Parts/ reel: 160
Parts/ m: 27,7
Forward run: 0,3 m
After run: 0,29 m
Length: app. 6,35 m
Reel D: 380mm



M/s 1:1

		general tolerance		scale: 2,5:1	
		ISO 2768		Assembly instruction:	
		mH		Stripping dimension:	
		angle: ±5°		QLS-Anbauwinkelbuchse	
EC_055_18	i	T and R corrected	21.06.18	kpolgar	date name
EC_055_18	h	Surface exchanged	19.06.18	kpolgar	generate 12.10.10 Schwär
EC_112_14	g	Tape and Reel	10.12.14	IFa	checked 20.06.18 F Fab.
EC_143_11	f	Add. dimension	15.12.11	RSch	Norm
design	e	Add. shoulder (5x)	21.07.11	RSch	
design	d	Corr. T and R	08.07.11	RSch	
design	c	Tolerance add.	18.02.11	RSch	
design	b	T and R added	10.11.10	RSch	
nr.	rev.	alteration	date	name	
					4852.QLS.2021.20'
					surface code
					Rev. i