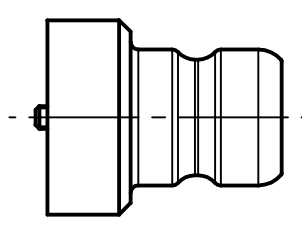
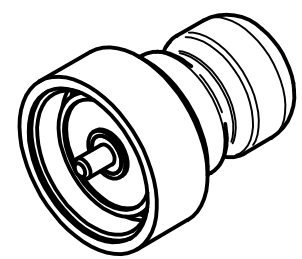


Part	Material	Surface
Housing	Bronze	Ni
Centre Contact	CuBe 2	Cu+Ag
Insulator	PTFE	-

M/s 1:1

M/s 1:1



IMS CONNECTOR SYSTEMS					general tolerance ISO 2768 mH angle: $\pm 5^\circ$		
					date	name	
					generate	02.11.06	Pölz
					checked		
					Norm		
nr.	rev.	alteration	date	name			

scale: 4:1	
Assembly instruction: Stripping dimension:	
4.1/9.5 Adapter KS 420 (Schnellkupplung)	
4.1/9.5 Adapter KS 420 (Quick coupling)	
4224.VNS.2010.009	Rev.