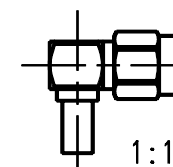
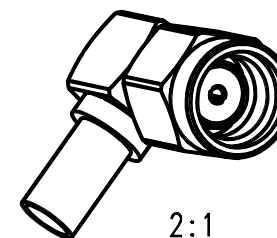
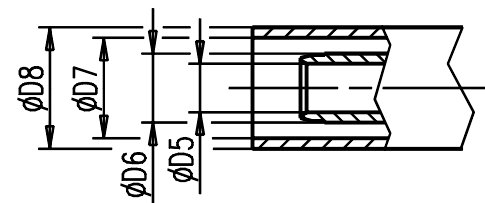
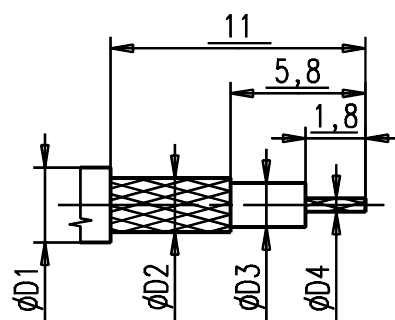


Kabelzuschnitt
Stripping dimension



No IEC-Standard!!

Part	Material	Surface
Housing / Nut	Brass	Au 0,8 μ m / 0,2 μ m
Centre Contact	Berylco 33-25	Au 1,3 μ m
Crimp ferrule	Copper	Au 0,2 μ m
Spring ring	stainless steel	
Insulator	PTFE	
Gasket	Si - Rubber	

Fuer Kabel /
For cable

Gr.	Type	$\phi D1$ max.	$\phi D2$ max.	$\phi D3$ max.	$\phi D4$ max.	$\phi D5$	$\phi D6$	$\phi D7$	$\phi D8$	Crimp Aussen/out	Crimp Innen/in
1											
2	RG 174 BU	2,80	2,20	1,67	0,54	1,70	2,60	3,20	3,80	3,25	solder
3											
4											
5											

IMS CONNECTOR
SYSTEMS

general tolerance
ISO 2768
mH

ISO 2768
-m-
0,5-3: $\pm 0,1$
3-6: $\pm 0,1$
6-30: $\pm 0,2$

scale: 5:1

Assembly instruction:
Stripping dimension:

	date	name
generate	07.11.05	Mayer
checked		
Norm		
46376		
design	c	Zuschnitt korrig.
design	b	el. optimiert
design	a	Ueberarbeitung
nr.	rev.	alteration
	date	name

SMA-Kabelwinkelbuchse rev.pol.
SMA-Cable mount angle jack rev.pol.

4024.42.2420.02'

Rev.
C