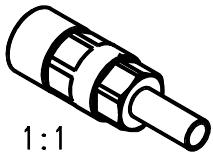
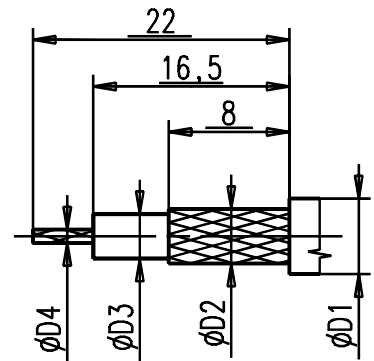


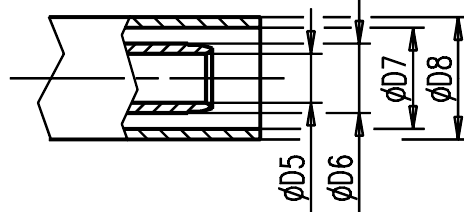
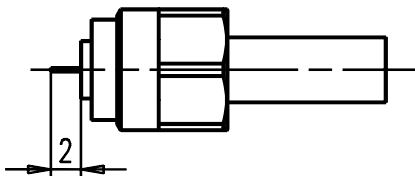
Steckbereich nach IEC 169-28 Grade1
mating area acc to IEC 169-28 Grade1



Kabelzuschnitt
Stripping dimension



Mounting detail 2:1
deviating from M-118



cut the centre conductor

Special crimp tool
for inner contact : AGK-2965

Gr.	Fuer Kabel / For cable Type Typ	$\phi D1$ nom.	$\phi D2$ nom.	$\phi D3$ nom.	$\phi D4$ nom.	$\phi D5$	$\phi D6$	$\phi D7$	$\phi D8$	Crimp Aussen/out	Crimp Innen/in
5	RD 179	3,20	2,40	1,50	0,23	1,70	2,60	3,58	4,3	3,65	1,20

IMS CONNECTOR SYSTEMS

general tolerance
ISO 2768
mH

scale: 5:1

Assembly instruction: M-118
Stripping dimension:

design	nr.	rev.	alteration	date	name
design	c		Crimp tool	02.12.02	Mayer
design	b		el. optimiert	21.10.02	Mayer
design	a		UEBERARBEITUNG	04.07.02	David
nr.	rev.	alteration	date	name	

generate	date	name
checked	05.06.02	David
Norm		
38946		

Kabelbuchse

Cable mount jack

75 Ω

3492.11.2410.05'

Rev.
C