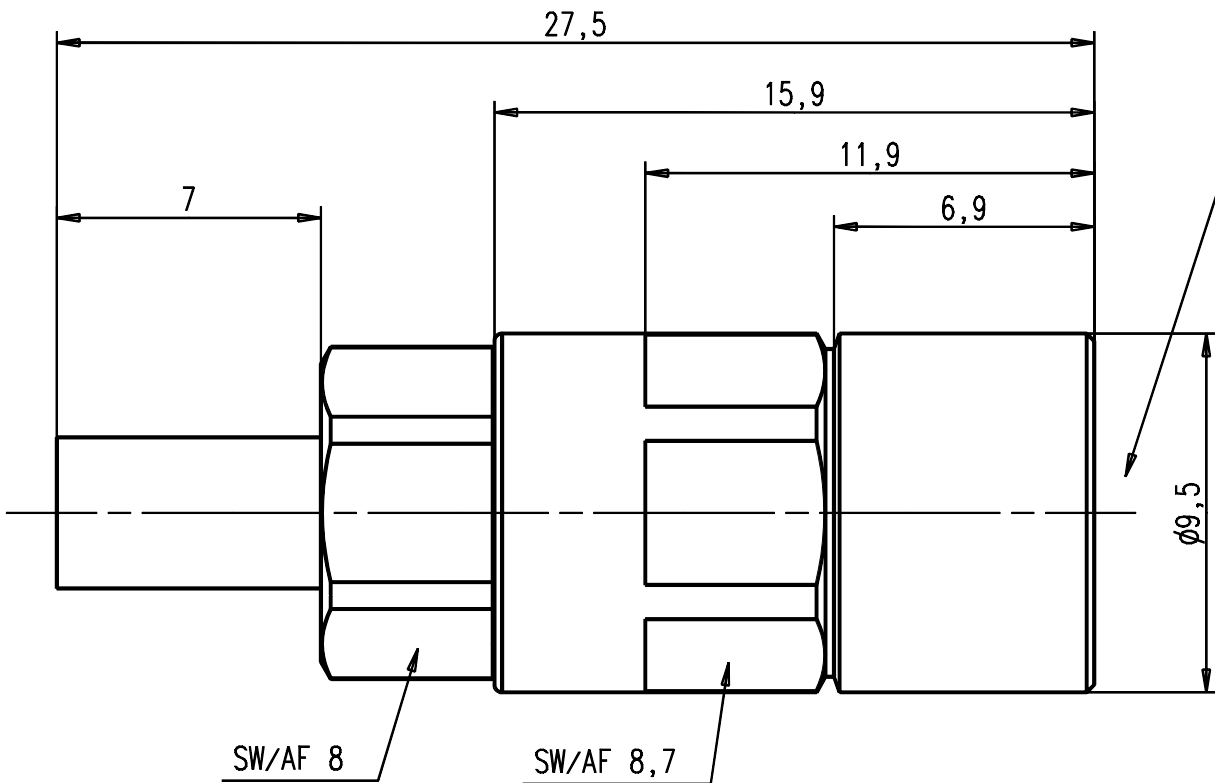
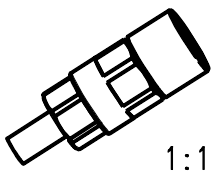
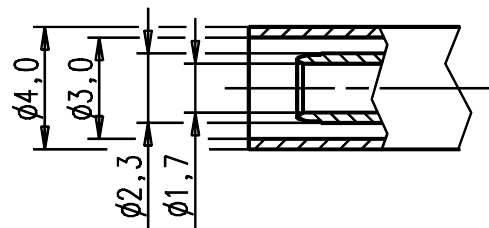
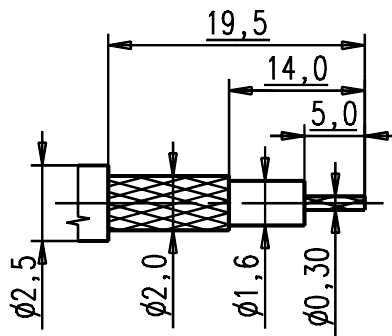


Steckbereich nach IEC 169-28 Grade1
Mating area acc.to IEC 169-28 Grade1



Kabelzuschnitt
Stripping dimension
RG 179



1:1

Crimp aussen/out: 3,25
Crimp innen/in: 1,20

Nur fuer Kabel: **Speedflex**
Only for cable: **RG 179**

				general tolerance ISO 2768 mH		scale: 5:1	
						Assembly instruction: M-118 Stripping dimension:	
				generate	21.08.02	date	Mayer
				checked			
				Norm			
				39692			
						Kabelbuchse Cable mount jack	
design	a	el. optimiert	28.08.02	Mayer	3544.11.2410.02'		75Ω
nr.	rev.	alteration	date	name			Rev. a