

High Voltage Inserts GENERAL DATASHEET

page 1 / 2

Applicable Standards

Interface according to

Standards: DIN 41612

Electrical characteristics

Operating voltage	≤ 2,8	kV / 50 Hz
Withstand voltage	≥ 3,8	kV / 50 Hz
Contact resistance	≤ 3,0	mA
Current carrying capacity up to	≤ 1,5	A

Mechanical characteristics

Durability (matings)	≥ 500	
Engagement force	max. 4,5	N
Disengagement force	min. 0,2	N

Materials

Contact pin	CuZn
Contact socket	CuBe / bronze
Housing	plastic
Clip ring	bronze / plastic

Standard plating

Contact pin	Au
Contact socket	Au
Clip ring	Ni / -

Environmental influences

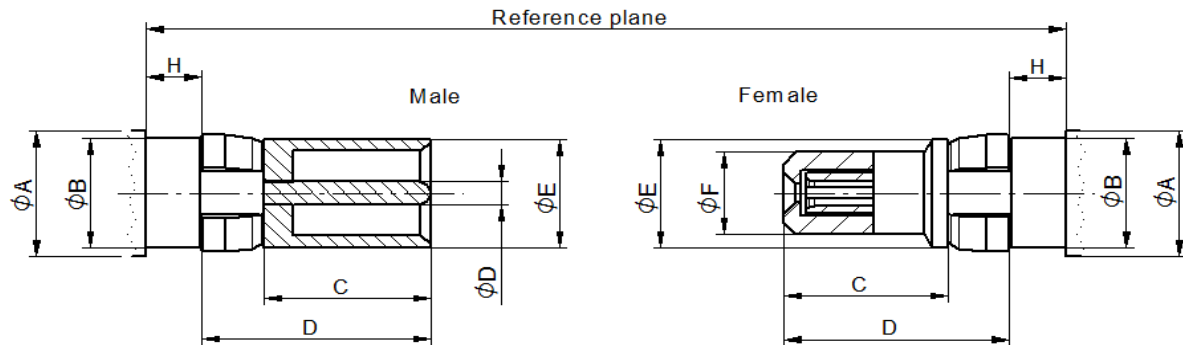
Temperature range	-55°C up to +125°C
Test categories	DIN 40045 / IEC 55/125/56
Relative humidity	MIL-STD-202, Method 106
Thermal shock	MIL-STD-202, Method 107, Cond. B
Shock	MIL-STD-202, Method 213, Cond. J
Vibration	MIL-STD-202, Method 204, Cond. B

RoHS compliant

Date: 04.12.2019 U. Mayer
 Approved: 17.12.2019 P. Schuh

Revision:

High Voltage Inserts GENERAL DATASHEET



	Male		Female	
	min.	max.	min.	max.
A	5,2	5,27	5,2	5,27
B	4,76	4,79	4,76	4,79
C	6,8		6,8	
D	0,99	1,04		
E	4,7	4,8	4,7	4,8
F			3,7	
G	6,8		6,8	
H	2,22	2,4	2,22	2,4

Dimension in mm

Some connectors may have a specification that differs from the above mentioned data.

While the information has been carefully compiled to the best of our knowledge, nothing is intended as representation or warranty on our part and no statement herein shall be construed as recommendation to infringe existing patents. In the effort to improve our products, we reserve the right to make changes judged to be necessary.

Date	Alteration	Signature		

Date: 04.12.2019 U. Mayer
 Approved: 17.12.2019 P. Schuh

Revision: