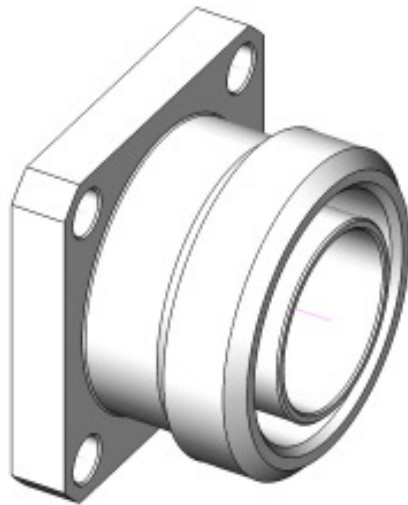


**R&D / RF & TEST LAB**Guideline for Cosmetic issues of 7/16 Coaxial Connectors

Object:	Give some general guideline for cosmetic issues
Validity:	7/16 Connector family
Restriction:	If other demands are stated on the drawings, the drawing is going take the priority
Responsibility:	All suppliers involved into the production process
range of use:	Suppliers, quality department, purchasing and production
Informed:	RND department



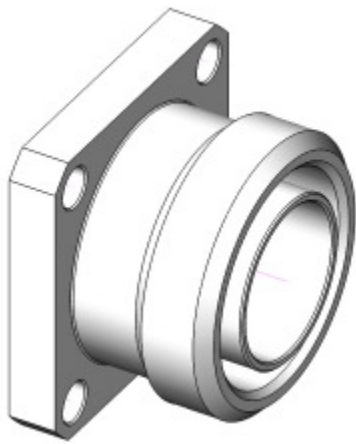
1.1

## Overview of revisions

Version	Author	Date	Reason
1.0	I.Sarfert / R. Baumg	10.02.06	First Draft
2.0	I.Sarfert	08.03.06	update
3.0	I.Sarfert	11.07.06	Fotos
4.0	I.Sarfert	11.08.06	update
5.0	A.Palotai	24.07.07	Fotos replaced
6.0	I.Sarfert	30.10.08	update

**R&D / RF & TEST LAB**

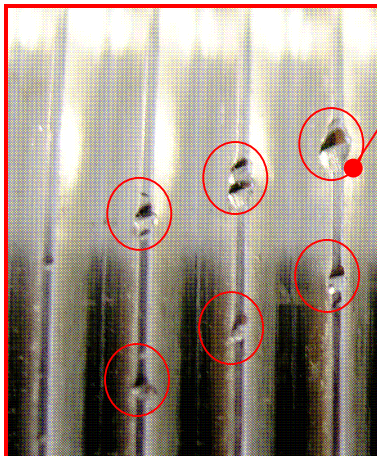
Guideline for Cosmetic issues of 7/16 Coaxial Connectors



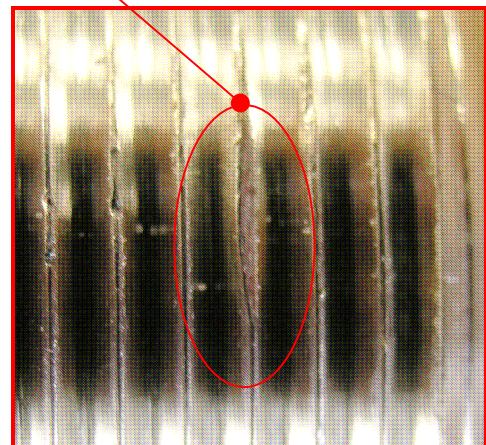
Thread according to gauge M29x1,5 6g  
(after plating)

2.1

No bump marks on the thread  
allowed!



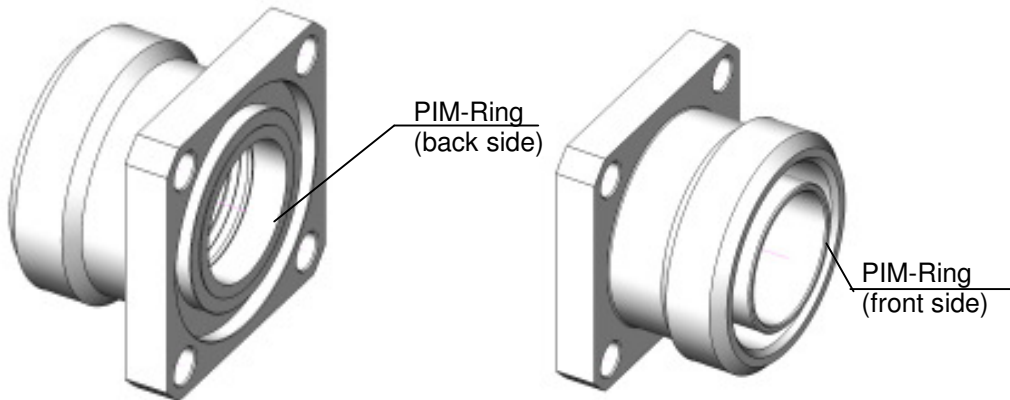
Not acceptable  
2.2



Not acceptable  
2.3

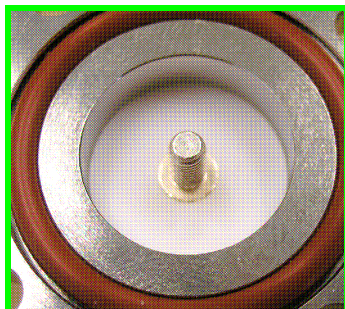
**R&D / RF & TEST LAB**

Guideline for Cosmetic issues of 7/16 Coaxial Connectors



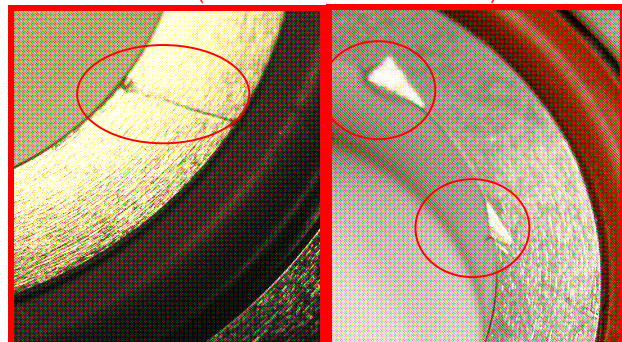
PIM-Ring (back side)

No hit places allowed



acceptable  
3.3

Homogenous chamfer is required  
(no manuell rework allowed)

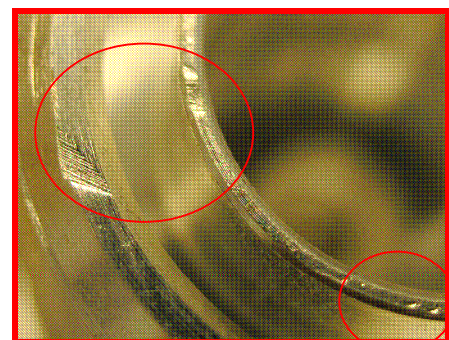


Not acceptable  
3.4

PIM-Ring (front side)



acceptable  
3.5

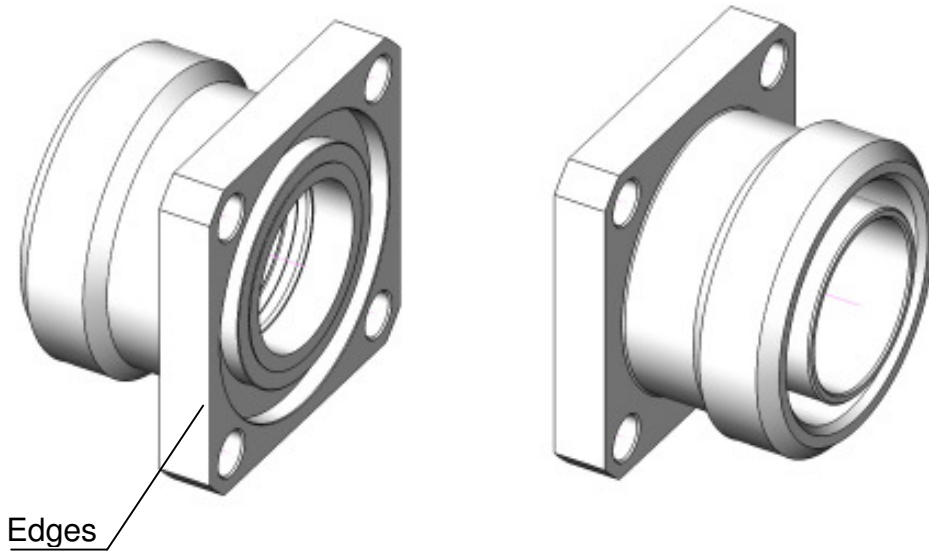


Not acceptable  
3.6

**Minor damages are acceptable if not perceptible with fingernail - test!**

**R&D / RF & TEST LAB**

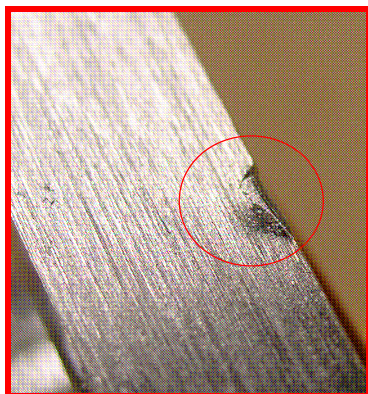
Guideline for Cosmetic issues of 7/16 Coaxial Connectors



---

Edges

No bump marks on edges allowed!



Not acceptable

No tarnished dark and dirty surface



Not acceptable

**R&D / RF & TEST LAB**

Guideline for surface roughness of 7/16 Coaxial Connectors

