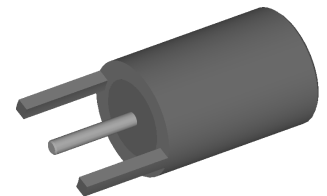


# Product data sheet

IMS CONNECTOR SYSTEMS GmbH  
 Obere Hauptstrasse 30  
 D-79843 Löffingen  
 Postfach 1141  
 D-79840 Löffingen

Tel (+49) 7654 901-0  
 Fax (+49) 7654 901-199  
 Net: www.imscs.com  
 E-mail: sales@imscs.com

<b>Part Number: 852.01.2510.001</b>		Revision: <b>a</b>
<b>Description: MCX-p.c.b. plug</b>		Date: <b>08.11.2004</b>
		Signature: <b>U. Mayer</b>
		Page: 1 of 2
<b>Design according to:</b>	-	<b>Customer design</b>
<b>Electrical characteristics</b>	colored value means: still under test target value	
	Value	Unit
Impedance ( MIL-C- 39012B)	<b>50</b>	[Ω]
Operating frequency up to	<b>6</b>	[GHz]
Return loss		
1 GHz	<b>28</b>	[dB]
2 GHz	<b>28</b>	[dB]
4 GHz	<b>18</b>	[dB]
6 GHz	<b>14</b>	[dB]
10 GHz		[dB]
18 GHz		[dB]
3rd. Order PIM product 2x43dBm	/	[dBc]
Insulation resistance	<b>5</b>	[GΩ]
Contact resistance		
Centre contact	<b>5,0</b>	[mΩ]
Outer contact	<b>1,0</b>	[mΩ]
Contact current max. (DC)	<b>1,5</b>	[A]
Operating voltage	<b>170</b>	[V]
Proof voltage	<b>500</b>	[V]
		Picture
		Remarks
		at 910MHz / at 1870 MHz
<b>Mechanical characteristics</b>	Value	Unit
Engagement force		[N]
Separating force		[N]
Mating cycles	<b>&gt;500</b>	



# Product data sheet

IMS CONNECTOR SYSTEMS GmbH  
 Obere Hauptstrasse 30  
 D-79843 Löffingen  
 Postfach 1141  
 D-79840 Löffingen

Tel (+49) 7654 901-0  
 Fax (+49) 7654 901-199  
 Net: www.imscs.com  
 E-mail: sales@imscs.com

<b>Part Number:</b> 852.01.2510.001	<b>Revision:</b> a
<b>Description:</b> MCX-p.c.b. plug	<b>Date:</b> 08.11.2004
	<b>Signature:</b> U. Mayer
	<b>Page:</b> 2 of 2

<u>Material &amp; plating</u>	Material	Plating
Spring basket	<b>brass</b>	<b>Cu + Ni + 0,2µm Au</b>
Centre contact	<b>copper beryllium</b>	<b>Ni + 0,8µm Au</b>
Other metal parts	-	-
Insulator	<b>PTFE</b>	-
Crimp ferrule	-	-
Gasket	-	-

<u>Environmental influences</u>		Remarks
Operating temperature range	-55°C up to +125°C Standard	
Climatic sequence: 1. Dry heat 2. Damp heat, cyclic, 1 cycle 3. Cold 4. Damp heat, cyclic, 6 cycles	IEC 60068-2-61 IEC 60068-2-2-Ba IEC 60068-2-30-Db IEC 60068-2-1-Aa IEC 60068-2-30-Db	

Notes

<u>Update historie</u>		
Rev.	date	Signature
a	14.10.2005	um