

Product Data Sheet / Produkt Datenblatt

Part Number

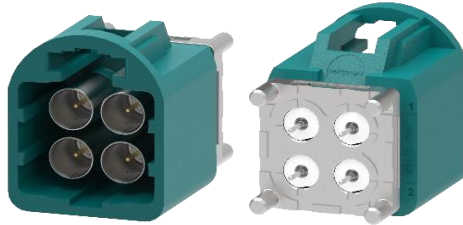
5601.MCAH.1X10.007

Teilenummer

Description

**MCAH-PCB-Anbauwinkelstecker 4-Pol
 MCAH-PCB-Mount Angle Plug 4-pol**

Beschreibung



view coding Z

Design according to

888-U-004-2-Z02_A

Ausführung nach

Electrical characteristics / Elektrische Eigenschaften

		Value/Wert	Unit/ Einheit	
Impedance (MIL-C-39012B)		50 ± 5	[Ω]	Impedanz (MIL-C-39012B)
Operating frequency up to		9	[GHz]	Betriebsfrequenz bis zu
Return loss*	DC - 3 GHz	≥ 25	[dB]	Rückflussdämpfung*
	3 - 6 GHz	≥ 20	[dB]	
	6 - 9 GHz	≥ 12	[dB]	
Insertion Loss		≤ 0,1 * √f (GHz)	[dB]	Einfügedämpfung
Cross Talk*	DC - 9 GHz	≥ 60	[dB]	Nebensprechen*
Shielding Effectiveness*	DC - 3 GHz	≥ 62	[dB]	Schirmungseffizienz
	3 - 6 GHz	≥ 60	[dB]	
	6 - 9 GHz	≥ 50	[dB]	
Insulation resistance		≥ 1	[GΩ]	Isolationswiderstand
Contact resistance				Kontakt-Widerstand
Centre contact	each contact	≤ 15	[mΩ]	Innenkontakt
Outer contact	each contact	≤ 7,5	[mΩ]	Außenkontakt
Contact current max. (DC)	each contact	3	[A] DC	Kontakt-Strombelastbarkeit max (DC)
Operating voltage		≤ 60	[V] DC	Betriebsspannung
Proof voltage		500	[Vms]	Prüfspannung

Formblatt Nr.: Form-TK-013ab Rev. 13 - Release 2020/

Product Data Sheet / Produkt Datenblatt

Part Number	5601.MCAH.1X10.007	Teilenummer
Description	MCAH-PCB-Anbauwinkelstecker 4-Pol MCAH-PCB-Mount Angle Plug 4-pol	Beschreibung

Mechanical characteristics / Mechanische Eigenschaften

	Value/ Wert	Unit/ Einheit	
Engagement force	≤ 75	[N]	Steckkraft
Separating force	≥ 5 / ≤ 60	[N]	Ziehkraft
Mating cycles	≥ 10	[-]	Steckzyklen
Retention force locked system	≥ 120	[N]	Haltekraft Steckerverriegelung

Material & plating / Material & Oberfläche

	Material/Material	Plating/Oberflächen	
Outer contact	Bronze	Sn	Außenkontakt
Centre contact	Brass	Au	Innenkontakt
Plastic housing	PA-GF	-	Kunststoffgehäuse
Other metal parts	GD-Zn	Sn	sonstige Metallteile
Insulator	LCP	-	Isolator

Environmental influences

Umwelteinflüsse

Temperature range	-40°C < T < +105°C	Temperaturbereich
Mechanical shock	IEC 60068-2-27	Mechanischer Schock
Vibration	IEC 60068-2-64 Severity 1	Vibration
Thermal change	IEC 60068-2-14	Temperaturwechsel
Damp heat, cyclic	IEC 60068-2-30	Feuchte Wärme, zyklisch
Dry heat	IEC 60068-2-2 (+105°C)	Trockene Wärme
RoHS	compliant	RoHS
Solder profile	according to JEDEC 020 (250°)	Lötprofil

Notes

Aufzeichnungen

- * Connector only, performance in application strongly depends on PCB type and layout
- * Meet USCAR-49 requirements

While the information has been carefully compiled to the best of our knowledge, nothing is intended as representation or warranty on our part and no statement herein shall be construed as recommendation to infringe existing patents. In the effort to improve our products, we reserve the right to make changes judged to be necessary.