

Product Data Sheet / Produkt Datenblatt

Part Number

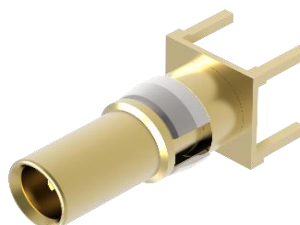
53.2515.401

Teilenummer

Description

**Anbaubuchse
PCB mount jack**

Beschreibung



Design according to

DIN 41626

Ausführung nach

Electrical characteristics / Elektrische Eigenschaften

| | | colored value means: under validation | | |
|---------------------------|----------------|--|--------------|-------------------------------------|
| | | Value/Wert | Unit/Einheit | |
| Impedance (MIL-C-39012B) | | 50 | [Ω] | Impedanz (MIL-C-39012B) |
| Operating frequency up to | | 6 | [GHz] | Betriebsfrequenz bis zu |
| Return loss | | | | |
| | 1 GHz | > 40 | [dB] | |
| | 2 GHz | > 40 | [dB] | |
| | 4 GHz | > 28 | [dB] | |
| | 6 GHz | > 18 | [dB] | |
| Insulation resistance | | > 1 | [GΩ] | Isolationswiderstand |
| Contact resistance | | | | Kontakt-Widerstand |
| | Centre contact | <10 | [mΩ] | Innenkontakt |
| | Outer contact | < 3 | [mΩ] | Außenkontakt |
| Contact current max. (DC) | | 1,5 | [A] DC | Kontakt-Strombelastbarkeit max (DC) |
| Operating voltage | | 250 | [V] eff | Betriebsspannung |
| Proof voltage | | 750 | [V] eff | Prüfspannung |

Mechanical characteristics / Mechanische Eigenschaften

| | | Value/ Wert | Unit/Einheit | |
|------------------|--|-------------|--------------|-------------|
| Engagement force | | max. 10 | [N] | Steckkraft |
| Separating force | | min. 1 | [N] | Ziehkraft |
| Mating cycles | | > 500 | | Steckzyklen |

Product Data Sheet / Produkt Datenblatt

| | | |
|--------------------|---------------------------------------|---------------------|
| Part Number | 53.2515.401 | Teilenummer |
| Description | Anbaubuchse PCB mount jack | Beschreibung |

Material & plating / Material & Oberfläche

| RoHS (2002/95/EC) conform | | | |
|---------------------------|-------------------|---------------------|----------------------|
| | Material/Material | Plating/Oberflächen | |
| Outer contact | Brass | Cu + Ni + 0,8µm Au | Außenkontakt |
| Centre contact | Copper beryllium | Ni + 2,5µm Au | Innenkontakt |
| Insulator | PTFE | - | Isolator |
| Other metal parts | Bronze | Cu + 3µm Ni | sonstige Metallteile |

Environmental influences / Umwelteinflüsse

| | | |
|--------------------------------|--------------------|--------------------------------------|
| Operating temperature range | -55°C up to +125°C | Betriebstemperaturbereich |
| | Standard | |
| Climatic sequence: | IEC 60068-2-61 | Klimafolge: |
| 1. Dry heat | IEC 60068-2-2-Ba | 1. Trockene Hitze |
| 2. Damp heat, cyclic, 1 cycle | IEC 60068-2-30-Db | 2. Feuchte Wärme, zyklisch, 1 Zyklus |
| 3. Cold | IEC 60068-2-1-Aa | 3. Kälte |
| 4. Damp heat, cyclic, 6 cycles | IEC 60068-2-30-Dd | 4. Feuchte Wärme, zyklisch, 6 Zyklen |
| Solder profile | | Lötprofil |

Notes / Aufzeichnungen

While the information has been carefully compiled to the best of our knowledge, nothing is intended as representation or warranty on our part and no statement herein shall be construed as recommendation to infringe existing patents. In the effort to improve our products, we reserve the right to make changes judged to be necessary.

Update History

| Rev. | Date | Signature | Alteration |
|------|------|-----------|-----------------------------|
| | | | |
| | | | |
| | | | |
| | | | |
| | | | |
| | | | |
| | | | |
| | | | |
| | | | Formblatt-Nr.: Form-TK-013b |
| | | | Rev. 04 |
| | | | Released 17.ápr.14 |