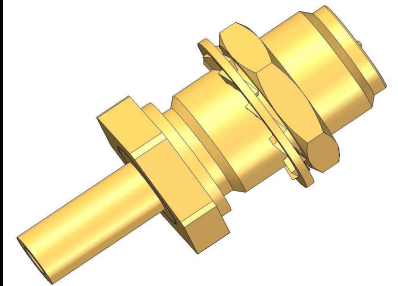


Product data sheet

IMS CONNECTOR SYSTEMS GmbH
 Obere Hauptstrasse 30
 D-79843 Löffingen
 Postfach 1141
 D-79840 Löffingen

Tel (+49) 7654 901-0
 Fax (+49) 7654 901-199
 Net: www.imscs.com
 E-mail: sales@imscs.com

Part Number: 4346.42.1410.043 Description: SMA Cable mount plug rev. pol.		Revision: - Date: 24.08.2007 Signature: Pözl N. Page: 1 of 2	
Design according to:		SMA reverse polarity	No IEC Standard
Electrical characteristics:		colored value means: still under test target value	Picture
		Value	Unit
Impedance (MIL-C- 39012B) Operating frequency up to		50 10	[Ω] [GHz]
Return loss measured with cable typ:		Hirose U.FL-LP-066	Hirose
1 GHz 2 GHz 4 GHz 6 GHz 10 GHz		31 29 23 18 13	[dB] [dB] [dB] [dB] [dB]
3rd. Order PIM product 2x43dBm Insulation resistance Contact resistance Centre contact Outer contact Contact current max. (DC) Operating voltage Proof voltage		/ 5 4 2 2 500 1000	[dBc] [GΩ] [mΩ] [mΩ] [A] [V] [V]
			Remarks at 910MHz / at 1870 MHz
Mechanical characteristics:		Value	Unit
Engagement force Separating force		- -	[N] [N]
Mating cycles		> 500	



Product data sheet

IMS CONNECTOR SYSTEMS GmbH
 Obere Hauptstrasse 30
 D-79843 Löffingen
 Postfach 1141
 D-79840 Löffingen

Tel (+49) 7654 901-0
 Fax (+49) 7654 901-199
 Net: www.imscs.com
 E-mail: sales@imscs.com

Part Number: 4346.42.1410.043	Revision: -
Description: SMA Cable mount plug rev. pol.	Date: 24.08.2007
	Signature: Pölz N.
	Page: 2 of 2

<u>Material & plating:</u>	RoHS (2002/95/EC) conform	
	Material	Plating
Outer contact	Brass	Ni + Ni-P + 0,15µm Au
Centre contact	Brass	Ni + Ni-P + 0,15µm Au
Crimp ferrule	Brass	Ni + Ni-P + 0,15µm Au
Other metal parts	Brass / Bronze	Cu + Ni + 0,2µm Au
Insulator	PTFE	-

<u>Environmental influences:</u>		Remarks
Operating temperature range	-55°C up to +125°C Standard	
Climatic sequence:	IEC 60068-2-61 IEC 60068-2-2-Ba IEC 60068-2-30-Db IEC 60068-2-1-Aa IEC 60068-2-30-Db	
Solder profile:	-	

Notes:

<u>Update historie</u>			
Rev.	Date	Alteration	Signature