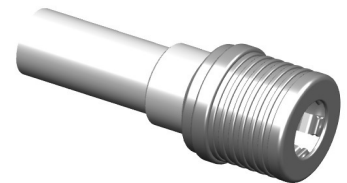


Product data sheet

IMS CONNECTOR SYSTEMS GmbH
 Obere Hauptstrasse 30
 D-79843 Löffingen
 Postfach 1141
 D-79840 Löffingen

Tel (+49) 7654 901-0
 Fax (+49) 7654 901-199
 Net: www.imscs.com
 E-mail: sales@imscs.com

Part Number: 3934.QLS.1410.085		Revision: -
Description: Cable mount plug		Date: 30.06.2005
		Signature: R. Schwär
		Page: 1 of 2
Design according to:	-	
Electrical characteristics	colored value means: still under test target value	
	Value	Unit
Impedance (MIL-C- 39012B)	50	[Ω]
Operating frequency up to	...10	[GHz]
Return loss measured with cable typ:	RG 400 /U	Habia
1 GHz	31	[dB]
2 GHz	30	[dB]
4 GHz	24	[dB]
6 GHz	22	[dB]
10 GHz	16	[dB]
18 GHz	-	[dB]
3rd. Order PIM product 2x43dBm	135	[dBc]
Insulation resistance	5	[GΩ]
Contact resistance		
Centre contact	3,0	[mΩ]
Outer contact	2,5	[mΩ]
Contact current max. (DC)	2	[A]
Operating voltage	500	[V]
Proof voltage	1000	[V]
		Picture
		Remarks
		at 910MHz / at 1870 MHz
Mechanical characteristics		
	Value	Unit
Engagement force	30	[N (typ.)]
Separating force	20	[N (typ.)]
Mating cycles	200	



Product data sheet

IMS CONNECTOR SYSTEMS GmbH
 Obere Hauptstrasse 30
 D-79843 Löffingen
 Postfach 1141
 D-79840 Löffingen

Tel (+49) 7654 901-0
 Fax (+49) 7654 901-199
 Net: www.imscs.com
 E-mail: sales@imscs.com

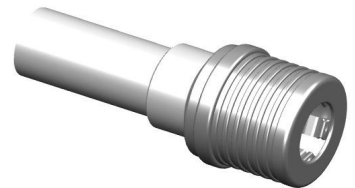
Part Number: 3934.QLS.1410.085		Revision: -
Description: Cable mount plug		Date: 30.06.2005
		Signature: R. Schwär
		Page: 2 of 2
Material & plating	Material	Plating
Tighten part	stainless steel	-
Push ferrule	stainless steel	-
Centre contact	brass	Cu + 2-4µm CuZnSn + 1,3µm Au
Crimp ferrule	copper	Cu + 2-4µm CuZnSn
Other metal parts	brass	Cu + 2-4µm CuZnSn
Insulator	PTFE	-
Environmental influences		
Operating temperature range	-40°C up to +85°C	Remarks
	Standard	
Climatic sequence:	IEC 60068-2-61	
1. Dry heat	IEC 60068-2-2-Ba	
2. Damp heat, cyclic, 1 cycle	IEC 60068-2-30-Db	
3. Cold	IEC 60068-2-1-Aa	
4. Damp heat, cyclic, 6 cycles	IEC 60068-2-30-Db	
Notes		
Update historie		
Rev.	date	Signature
Formblatt-Nr.: Form-TK-012b		

Product data sheet

IMS CONNECTOR SYSTEMS GmbH
 Obere Hauptstrasse 30
 D-79843 Löffingen
 Postfach 1141
 D-79840 Löffingen

Tel (+49) 7654 901-0
 Fax (+49) 7654 901-199
 Net: www.imscs.com
 E-mail: sales@imscs.com

Part Number: 3934.QLS.1410.085		Revision: -
Description: Cable mount plug		Date: 30.06.2005
		Signature: R. Schwär
		Page: 1 of 2
Design according to:	-	
Electrical characteristics	colored value means: still under test target value	
	Value	Unit
Impedance (MIL-C- 39012B)	50	[Ω]
Operating frequency up to	...10	[GHz]
Return loss measured with cable typ:	RG 142 B/U	Filotex
1 GHz	30	[dB]
2 GHz	29	[dB]
4 GHz	24	[dB]
6 GHz	22	[dB]
10 GHz	16	[dB]
18 GHz	-	[dB]
3rd. Order PIM product 2x43dBm	130	[dBc]
Insulation resistance	5	[GΩ]
Contact resistance		
Centre contact	3,0	[mΩ]
Outer contact	2,5	[mΩ]
Contact current max. (DC)	2	[A]
Operating voltage	500	[V]
Proof voltage	1000	[V]
		Picture
		Remarks
		at 910MHz / at 1870 MHz
Mechanical characteristics		
	Value	Unit
Engagement force	30	[N (typ.)]
Separating force	20	[N (typ.)]
Mating cycles	200	



Product data sheet

IMS CONNECTOR SYSTEMS GmbH
 Obere Hauptstrasse 30
 D-79843 Löffingen
 Postfach 1141
 D-79840 Löffingen

Tel (+49) 7654 901-0
 Fax (+49) 7654 901-199
 Net: www.imscs.com
 E-mail: sales@imscs.com

Part Number: 3934.QLS.1410.085		Revision: -
Description: Cable mount plug		Date: 30.06.2005
		Signature: R. Schwär
		Page: 2 of 2
Material & plating		
	Material	Plating
Tighten part	stainless steel	-
Push ferrule	stainless steel	-
Centre contact	brass	Cu + 2-4µm CuZnSn + 1,3µm Au
Crimp ferrule	copper	Cu + 2-4µm CuZnSn
Other metal parts	brass	Cu + 2-4µm CuZnSn
Insulator	PTFE	-
Environmental influences		
Operating temperature range	-40°C up to +85°C	Remarks
	Standard	
Climatic sequence:	IEC 60068-2-61	
1. Dry heat	IEC 60068-2-2-Ba	
2. Damp heat, cyclic, 1 cycle	IEC 60068-2-30-Db	
3. Cold	IEC 60068-2-1-Aa	
4. Damp heat, cyclic, 6 cycles	IEC 60068-2-30-Db	
Notes		
Update historie		
Rev.	date	Signature