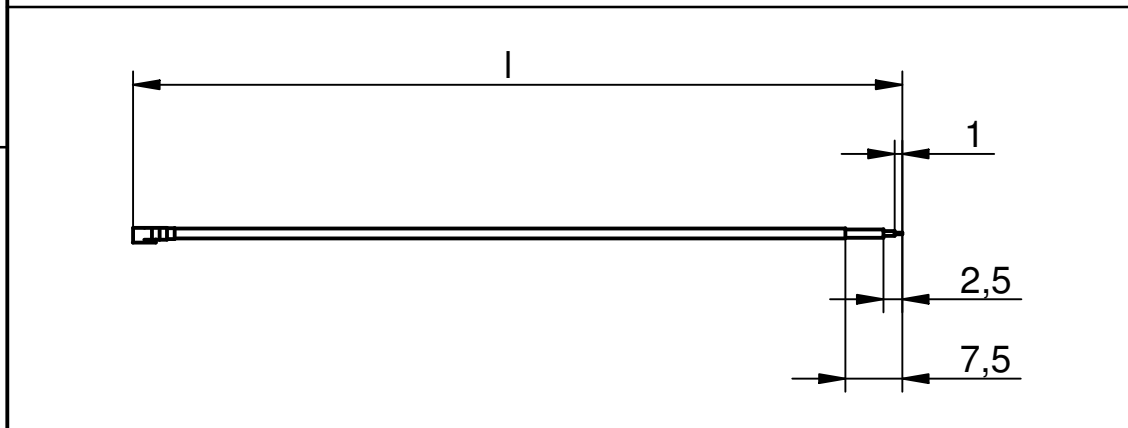


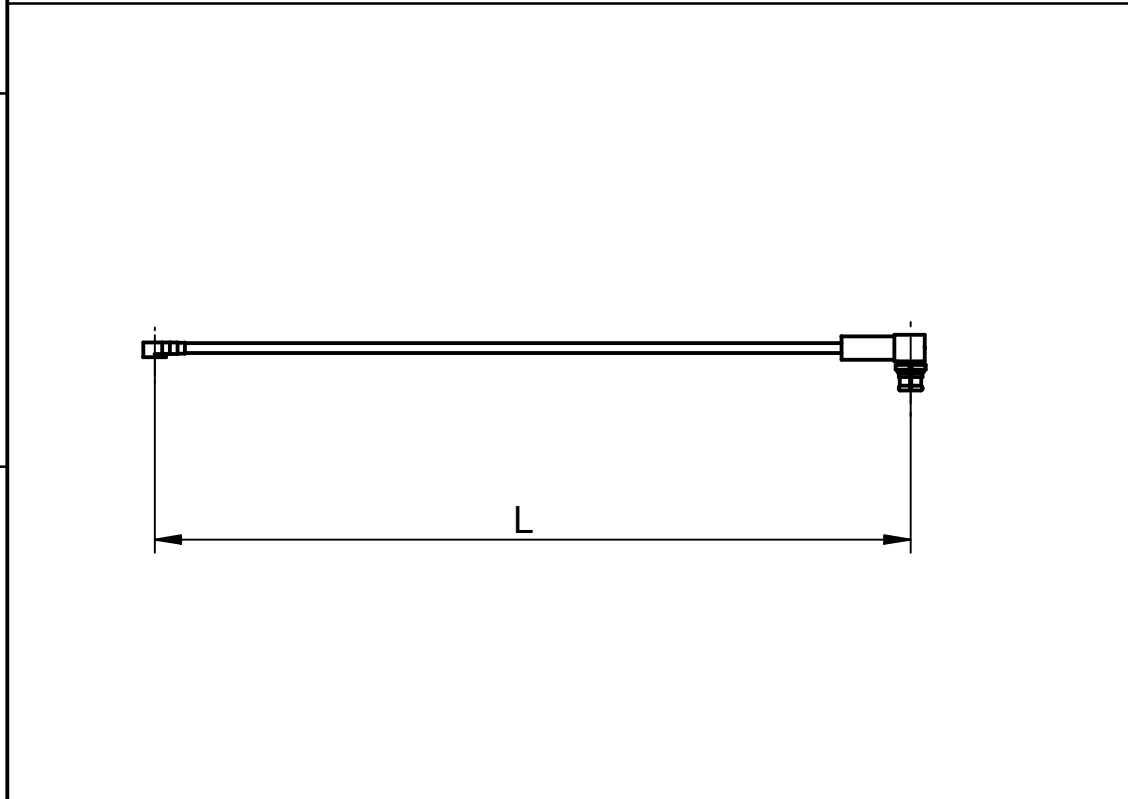
Pos.	Stk./ pcs	Bezeichnung/ Description	Typ-Nr./ Type-No.	Bemerkung/ Remark
①				
②	1	SMP-Kabelwinkelbuchse SMP-Cable mount angle plug	4109.SMP.2420.04'	
③	0,5	Kabel Cable	siehe Tabelle! (rechts) look at table! (right)	
④				
⑤				
⑥				
⑦				

Anzahl der Kabel / No. of cable	Stueck / Pcs
---------------------------------	--------------

Kabelzuschnitt / Stripping dimension	Bemerkungen/ Remarks
--------------------------------------	----------------------

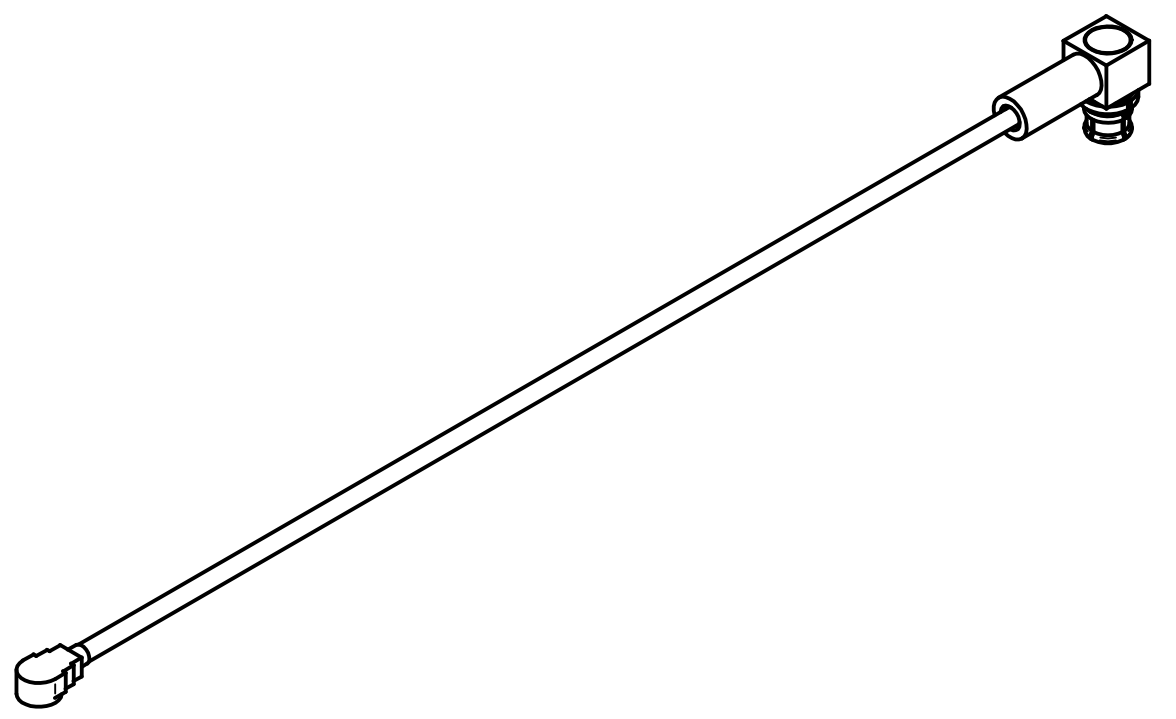


Pos. 1  
Aussen/outer :  
Innen/inner :  
Pos. 2  
Aussen/outer : crimp  $\square$  2,67  
Innen/inner : löten/solder

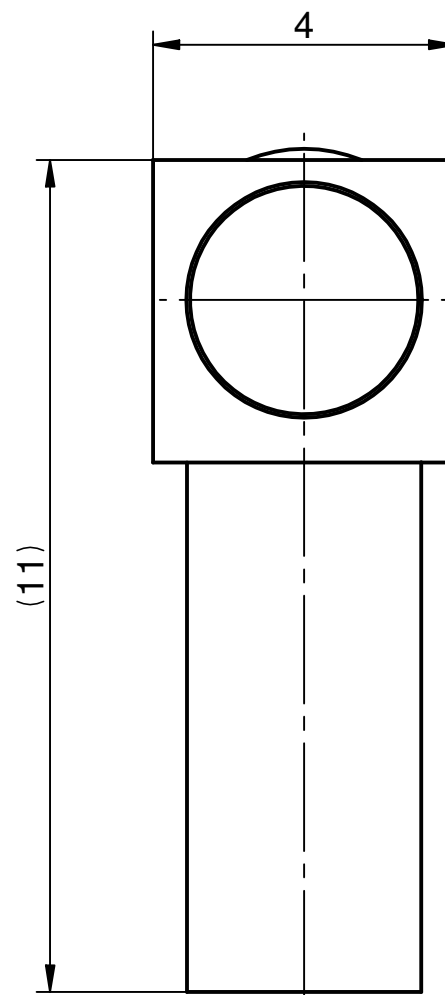
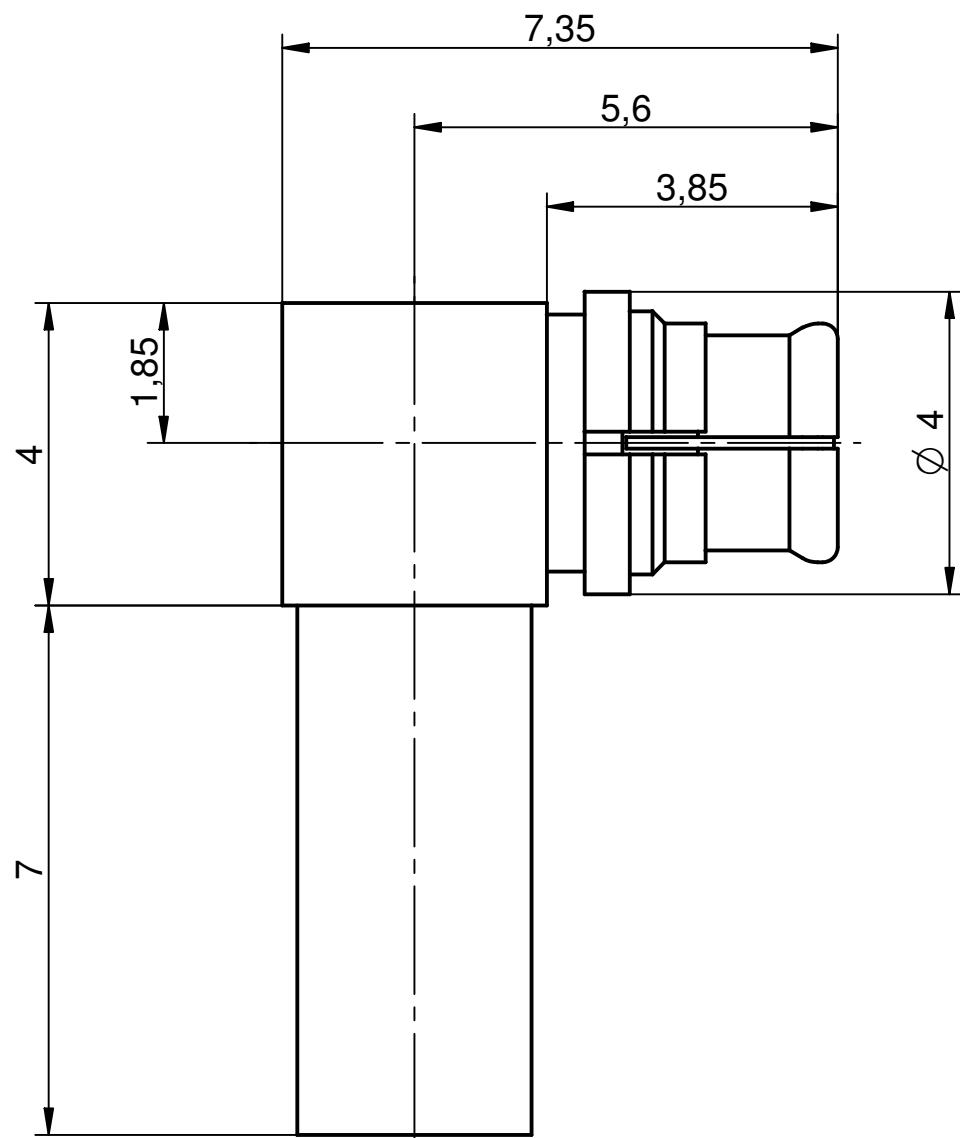


Pruefspannung: 500Veff/50Hz  
Test-voltage : 500Veff/50Hz

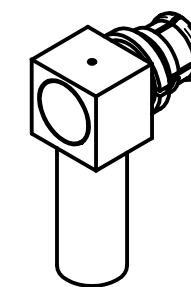
③	Kabel / Cable	Kabel-Typ / Cable-type	Zuschnittlaenge l / Cable-length l	Gesamtlaenge L / Total-length L
1	K-2250-01	U.FL-2LP-066-A200 (1133839)	98,5±2 <sup>(a)</sup>	97±2 <sup>(a)</sup>
①	K-2250-02	U.FL-2LP-066-A200 (1133839)	81,5±2	80±3



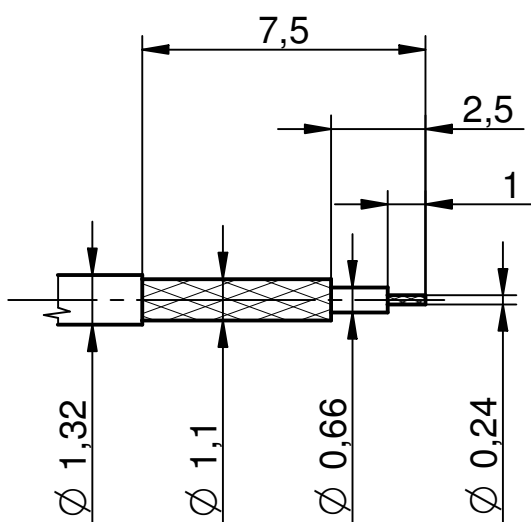
		general tolerance	scale:	
		<del>ISO 2768</del>	Assembly instruction:	
		AA-CS-12	Stripping dimension:	
		date	name	
		generate 20.03.06	Pözl	
		checked		
		Norm		
		HF-Leitung Flexibel		
		RF-Flexible cable assembly		
		K-2250-XX		
		Rev. b		
EC 147 06	b	neue Laengenvariante	23.08.06	Pözl
design nr.	a	Ueberarbeitung alteration	18.05.06	Pözl



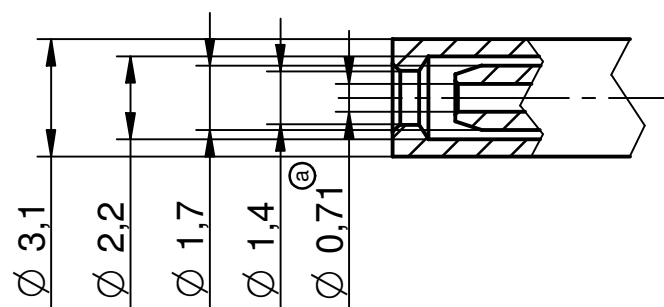
M/s 3:1



M/s 1:1



Kabelzuschnitt / stripping dimension  
Kabel / cable: Hirose U.FL-LP-066



Aussen crimpen / out crimp:  $\square$  2,67  
Innen crimpen / in crimp: löten / solder

				general tolerance ISO 2768 mH angle: $\pm 5^\circ$		scale: 10:1	
				generate 14.03.06 checked Norm		name Pözl SMP-Kabelwinkelbuchse SMP-Cable mount angle jack	
Entwurf nr.	a rev.	El. optimiert alteration	28.03.06 date	Pözl name			4109.SMP.2420.04'
						Rev. a	