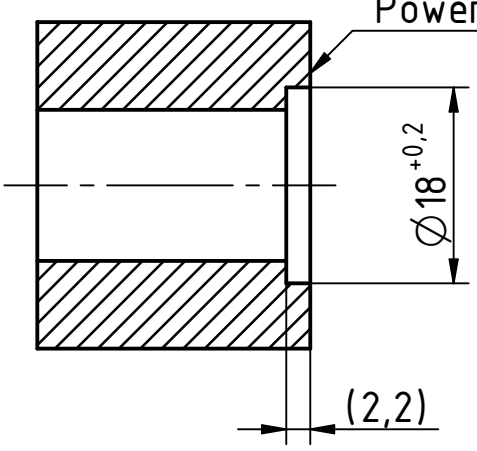
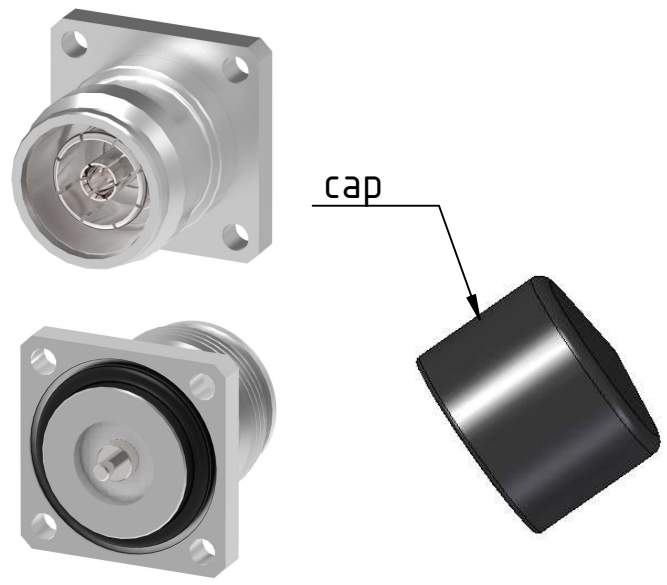


IMS mark, "I" letter

recommended mounting cavity dimension

Power thickness 70-160µm



Before powdering 2±0,03  
After powdering (2,2)

Part	Material	Surface
Inner contact	Phosphor bronze	Ag 5µm
Outer contact	Phosphor bronze	Ag 5µm
Housing	Brass	Tin-nickel alloy 3µm
Insulator	PTFE	
O-Ring	Silicon rubber, 70shore A	

IMS CONNECTOR SYSTEMS		General Tolerance ISO2768	ISO 2768 -m-	scale: 4:1	unit: mm	
		mH	0,5-3 ±0,1 3,0-6 ±0,1 6-30 ±0,2			
		angle: ±5°				
		date	name	4.3/10 Flange mount jack		
		generate	5/30/2018			Dony Ni
		checked				
		norm				
				7614.VDZ.2018.20Z		
				Rev.		
nr.	rev.	alteration	date	name	surface code	