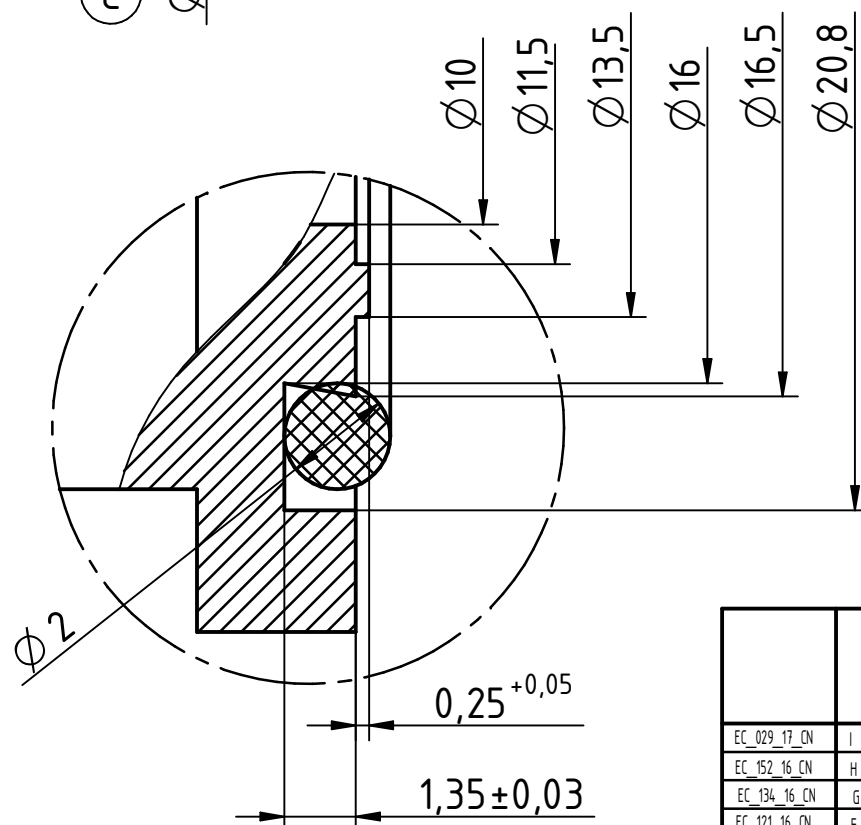
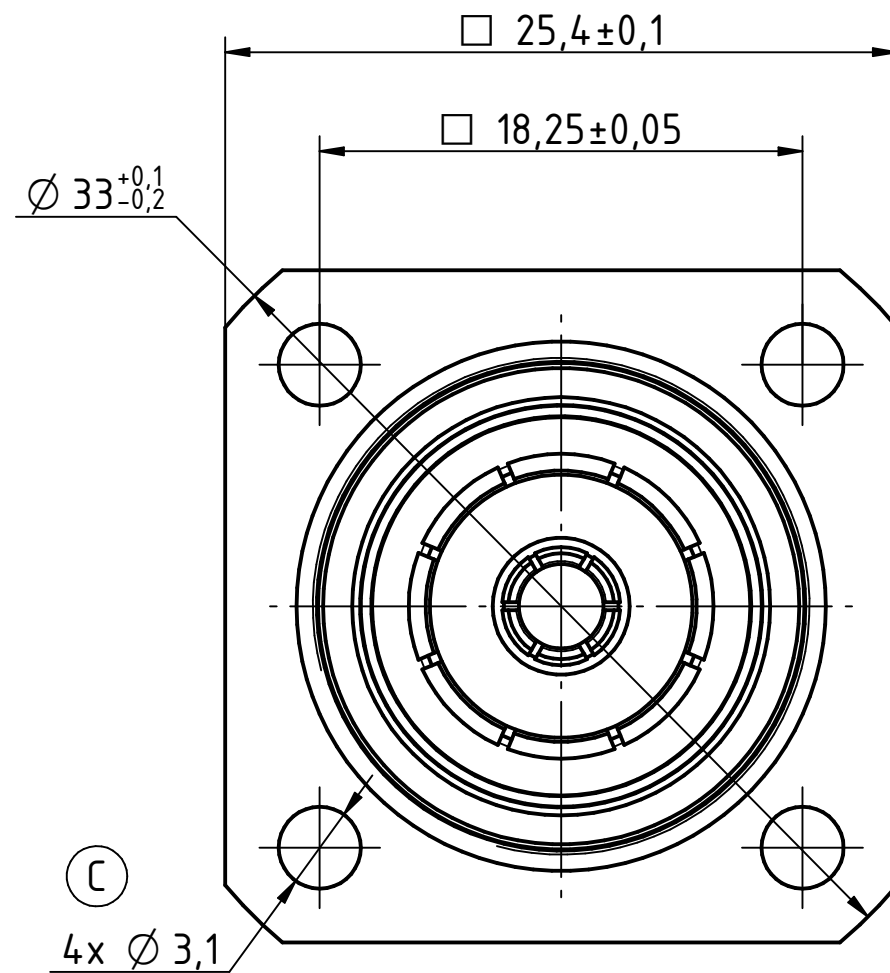
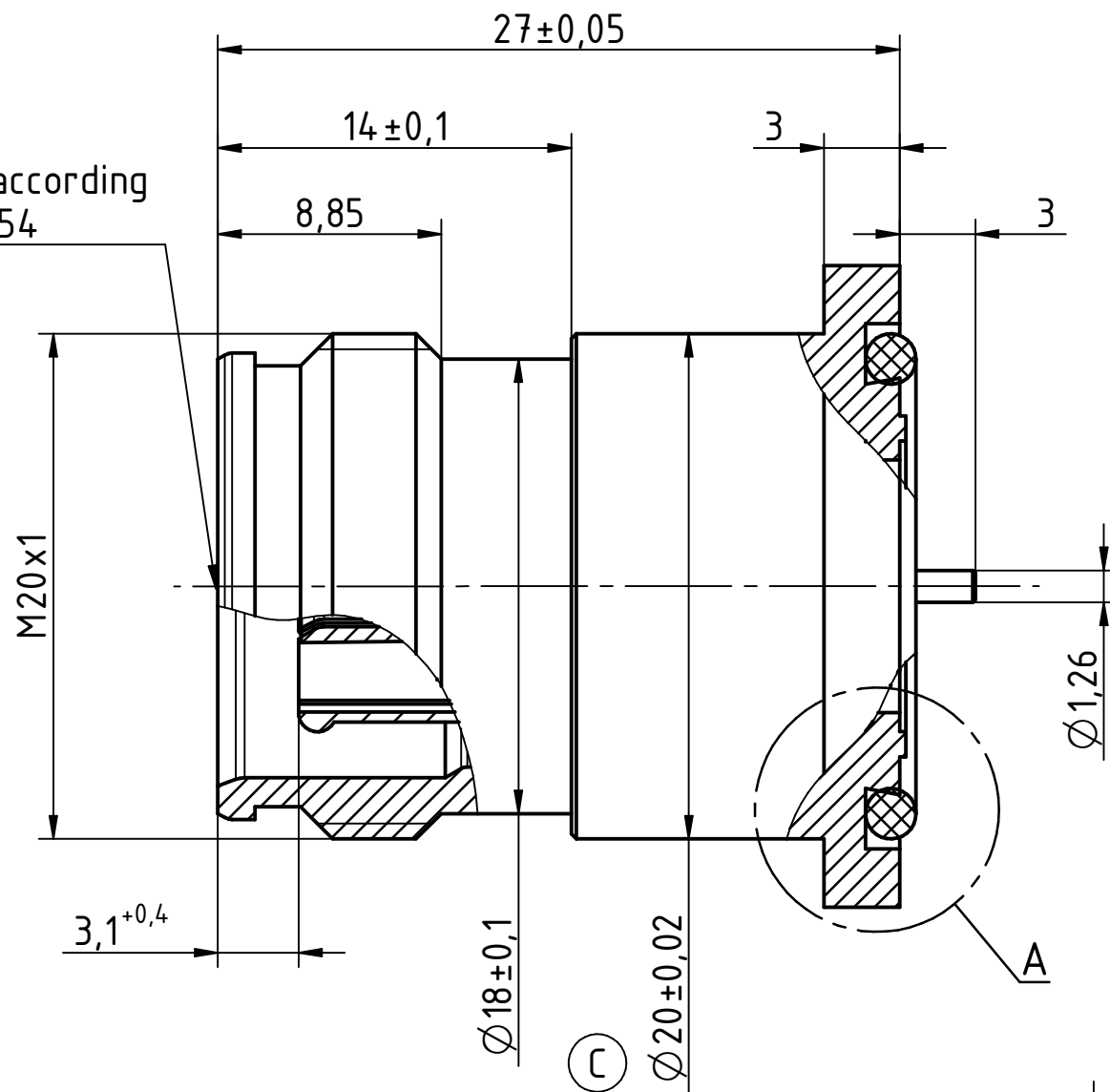
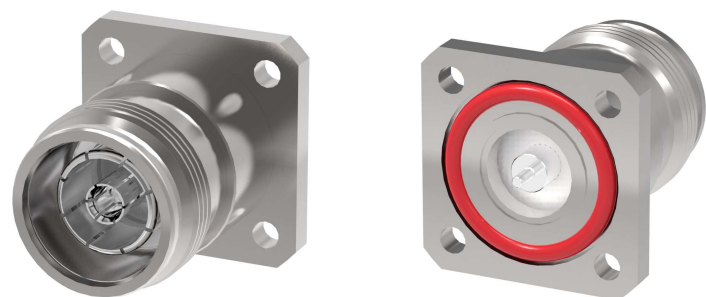
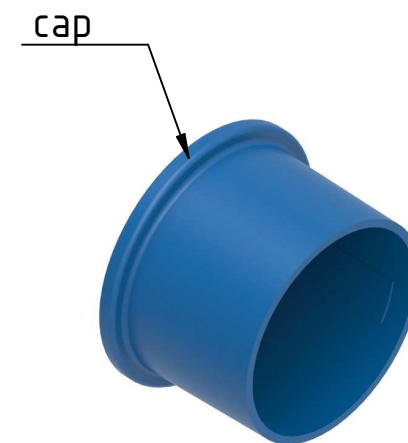


mating area according to IEC 61169-54



detail A  
7:1



IMS CONNECTOR SYSTEMS		General Tolerance ISO 2768 mH angle: ±5°	ISO 2768 -m- 0.5-3 ±0.1 3.0-6 ±0.1 6-30 ±0.2	scale: 3:1	unit: mm
EC_029_17_CN	I	mod. cap	05.16.17	Dony	date
EC_152_16_CN	H	redesign	10.24.16	Dony	generate 01/20/16
EC_134_16_CN	G	mod. cap	09.20.16	Dony	checked
EC_121_16_CN	F	mod. cap	08.24.16	Dony	norm
EC_109_16_CN	E	mod. cap	08.05.16	Dony	
EC_074_16_CN	D	mod. cap	05.24.16	Dony	
EC_055_16_CN	C	mod. housing	04.28.16	Dony	
EC_048_16_CN	B	mod. O-ring	04.08.16	Dony	
nr.	rev.	alteration	date	name	
				4.3/10 Flange mount jack	
				7457.VDZ.2018.20'	
				surface code	

Rev.  
1