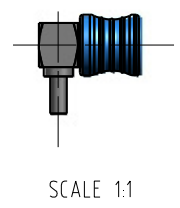


Colour code X	C	D	G
Colour	Capri blue	Bordeaux violet	Silver grey
RAL-No.	5019	4004	7001

Gr.	Type	ØD1 max.	ØD2 max.	ØD3 max.	ØD4 max.	ØD5	ØD6	ØD7	ØD8	Crimp Aussen/out	Crimp Innen/in
1	RG 178 BU;RG 196 AU;	2,10	1,30	0,90	0,30	0,92	1,70	2,25	3,20	2,67	löt/en solder
2	RG 174 BU;RG 316 U;	2,80	2,20	1,67	0,54	1,62	2,60	3,20	3,80	3,25	löt/en solder
3											
4											
5	RG 316 U-d;	3,10	2,50	1,55	0,54	1,62	2,60	3,60	4,30	3,65	löt/en solder

				general tolerance ISO 2768 mH		scale: <b>5:1</b>			
				date	name	<b>QLS(m)-Kabelwinkelstecker</b> <b>QLS(m)-Cable mount angle plug</b>			
generate	04.07.13	Schwaer							
checked									
Norm				059993					
design nr.	Q	Change acc. sim. alteration	20.08.13	hem	5103.QLS.1X20.0''				Rev. a
	rev.		date	name					



Kabelzuschnitt  
Stripping dimension

