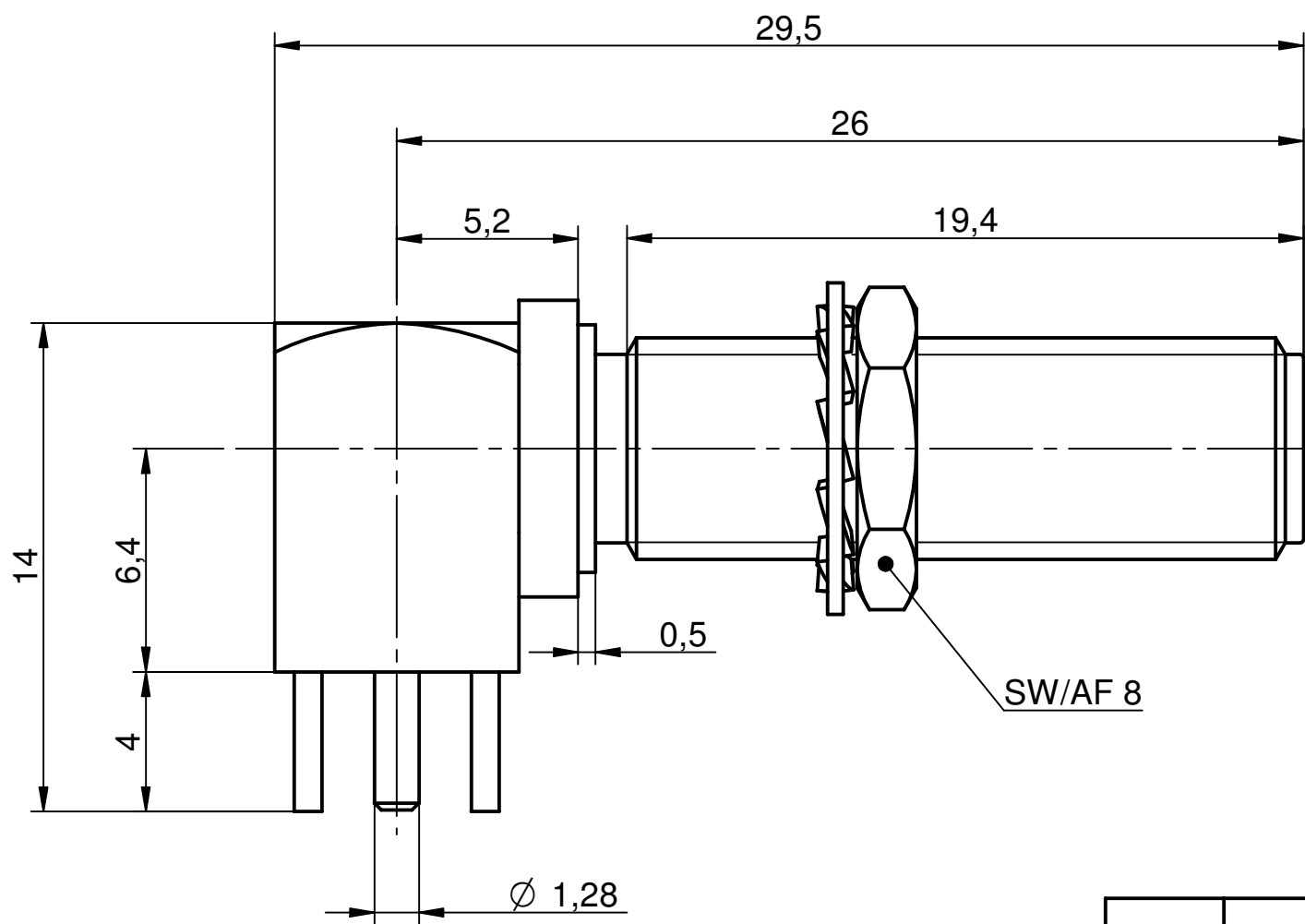
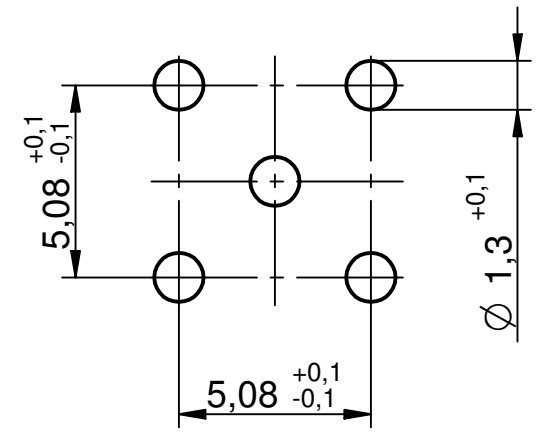
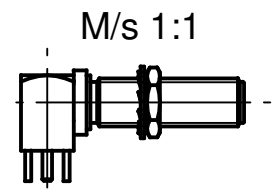
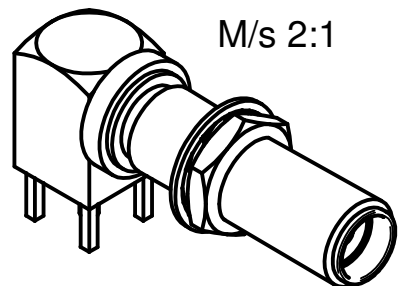


Montagebohrungen:
Mounting detail:



Steckbereich nach IEC 169-15 Grade 1
Mating area acc. to IEC 169-15 Grade 1

SW/AF 8



Blechstärke max. 2,4 mm
Sheet thickness max. 2,4 mm

IMS CONNECTOR SYSTEMS				general tolerance ISO 2768 mH angle: ± 5°		scale: 5:1	
				date		name	
generate		31.05.88	Schwär		Winkelchassisbuchse Bulkhead angle jack		
checked		07.06.88	Baumgärtner				
Norm							
EC 134 06		a	Überarbeitung	01.08.06	Pölz	449.42.2522.20'	
nr.		rev.	alteration	date	name		

