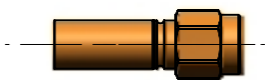
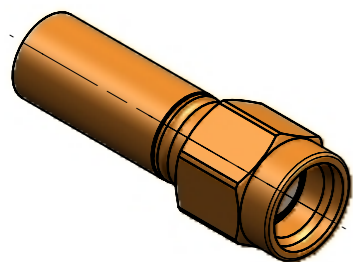


2:1

1:1



Fuer Kabel /
For cable

Gr.	Type Typ	$\phi D1$ max.	$\phi D2$ max.	$\phi D3$ max.	$\phi D4$ max.	$\phi D5$	$\phi D6$	$\phi D7$	$\phi D8$	Crimp Aussen/out	Crimp Innen/in
8	LMR 195	4,95	3,53	2,95	0,94	3,15	4,50	5,40	6,40	5,41	

IMS CONNECTOR
SYSTEMS

general tolerance
ISO 2768
mH

scale: 5:1

design nr.	rev.	Ueberarbeitung alteration	date	name
design	b	Ueberarbeitung	18.05.09	RSch
design	a	Ueberarbeitung	01.08.08	Renz

generate	date	name
checked	11.12.07	Renz
Norm		
051194		

Kabelbuchse rev. pol.
Cable mount jack reverse

4447.42.1410.08'

Rev.
b