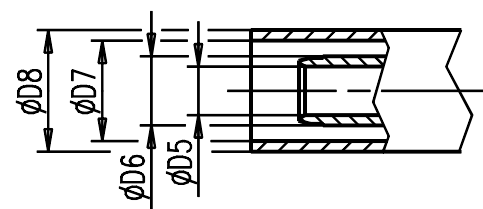
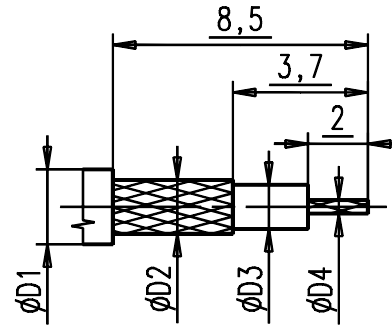


Kabelzuschnitt  
Stripping dimension



No IEC-Standard!!

Part	Material	Surface
Housing / Nut	Brass	Au 0,8 $\mu$ m / 0,2 $\mu$ m
Centre Contact	Berylco 33-25	Au 1,3 $\mu$ m
Spring ring	stainless steel	
Insulator	PTFE	
Gasket	Si - Rubber	

Fuer Kabel /  
For cable

Gr.	Type Typ	$\phi D1$ max.	$\phi D2$ max.	$\phi D3$ max.	$\phi D4$ max.	$\phi D5$	$\phi D6$	$\phi D7$	$\phi D8$	Crimp Aussen/out	Crimp Innen/in
1											
2	RG 174 BU;RG 316 U;	2,80	2,20	1,67	0,54	1,70	2,60	3,20	3,80	3,25	0,70
3											
4											
5											

IMS CONNECTOR SYSTEMS					general tolerance ISO 2768 mH	ISO 2768 -m 0,5-3: $\pm 0,1$ 3-6: $\pm 0,1$ 6-30: $\pm 0,2$	scale: 5:1
						date	name
						generate 07.11.05	Mayer
						checked	
						Norm	
						46366	
SMA-Kabelbuchse rev.pol.							Rev.
SMA-Cable mount jack rev.pol.							
4026.42.2410.02'							
nr.	rev.	alteration	date	name			