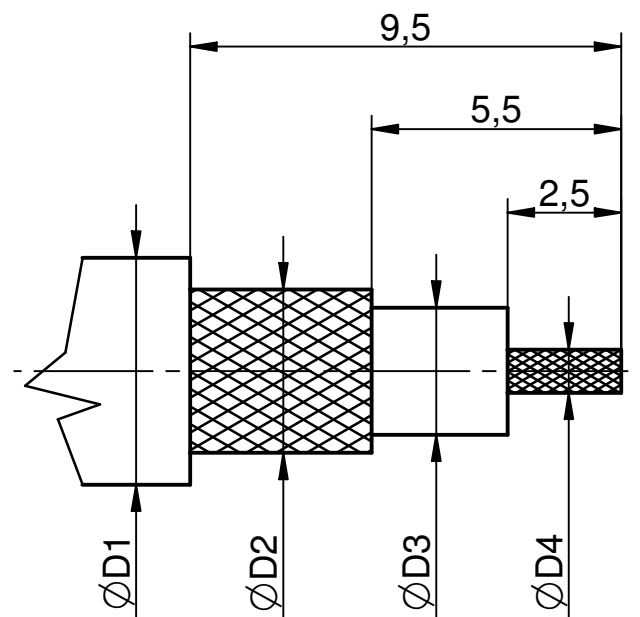


- 1) Steckkraft mit Buchse  
Engagment force with jack  
4-7N
- 2) Abzugskraft mit Buchse  
Separation force with jack  
max. 9N

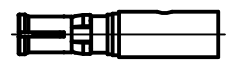
Kabelzuschnitt  
Stripping dimension



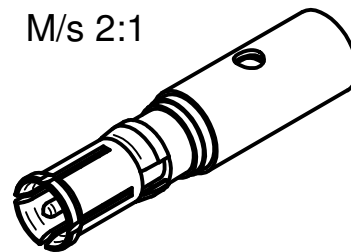
Für Kabel /  
For cable

Gr.	Type	ØD1 max.	ØD2 max.	ØD3 max.	ØD4 max.	ØD5	ØD6	ØD7	ØD8	L	I
8	RG 58 C/U	5,0	3,6	2,95	0,9	3,1	4,5	5,2	6,0	21,7	13,1

M/s 1:1



M/s 2:1



**IMS** CONNECTOR SYSTEMS

general tolerance  
ISO 2768  
mH  
angle: ± 5°

scale: 6:1

Assembly instruction: M6  
Stripping dimension: K9

Stecker (Lötausführung)

Plug (solder version)

EC_045_09 nr.	a rev.	Drawing updated alteration	09.04.09 date	Pözl name



306.23.1415.48'

Rev.  
a