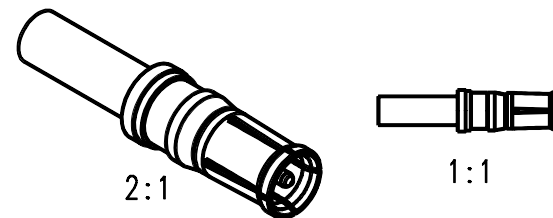
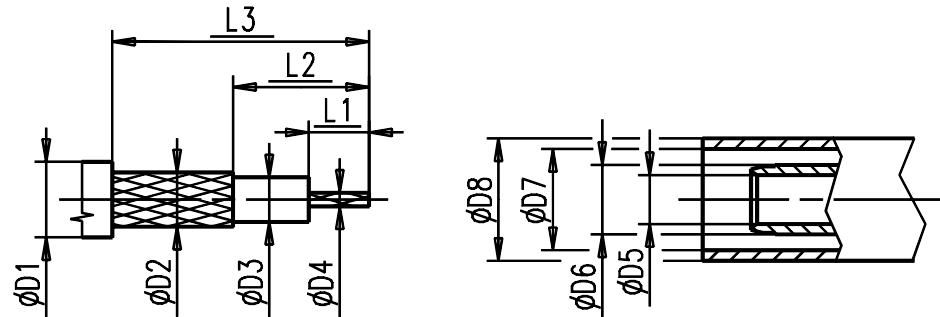


Kabelzuschnitt  
Stripping dimension



- Steckkraft mit Buchse  
Engagement force with jack  
4 -7 N
- Abzugskraft mit Buchse  
Separation force with jack  
max. 9 N

Fuer Kabel /  
For cable

Gr.	Type Typ	ØD1 max.	ØD2 max.	ØD3 max.	ØD4 max.	ØD5	ØD6	ØD7	ØD8	L1	L2	L3	Crimp Aussen/out Innen/in
1	RG 178 BU;RG 196 AU;	2,10	1,30	0,90	0,30	1,05	1,70	2,25	3,10	2,0	3,5	10,0	2,67 solder
2	RG 174 BU;RG 316 U;	2,80	2,20	1,67	0,54	1,70	2,60	3,20	3,80	2,5	5,5	9,5	3,25 solder
3													
4													
5	RG 316 U-d;	3,10	2,50	1,55	0,54	1,70	2,60	3,60	4,30	2,5	5,5	9,5	3,65 solder

**IMS** CONNECTOR  
SYSTEMS

general tolerance  
ISO 2768

ISO 2768  
-m  
0,5-3: ±0,1  
3-6: ±0,1  
6-30: ±0,2

scale: 7:1

Assembly instruction: M-173  
Stripping dimension:

date name

generate 16.07.04 Mayer

checked

Norm

43715

**HF2-Kabeleinbaustecker**  
**HF2-Bulkhead mount cable plug**

**3854.23.1415.4''**

Rev.  
**a**

design nr. a rev. el. optimiert alteration 26.07.04 date Mayer name