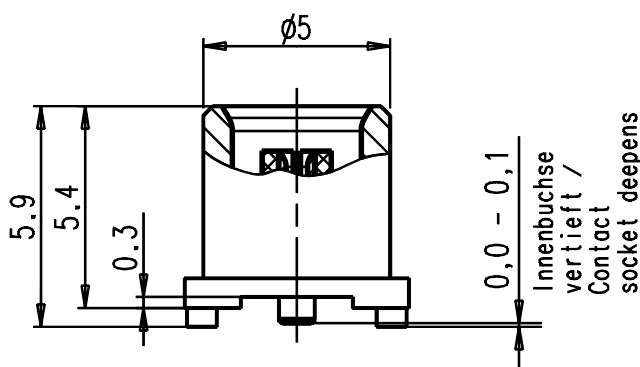
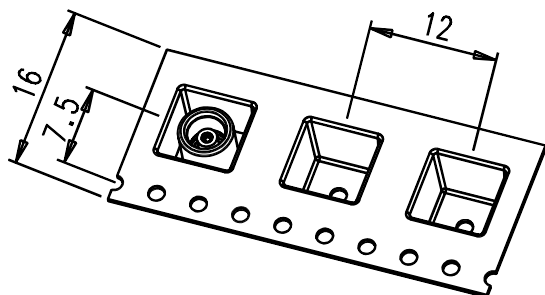
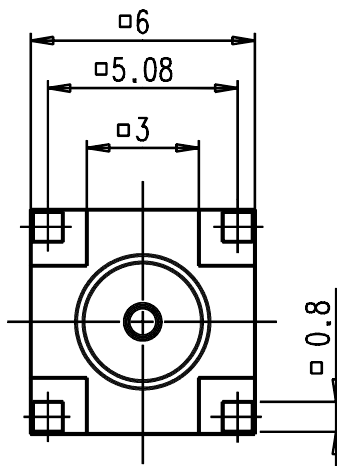


MATING FORCE WITH PLUG
MIN. 5N, MAX. 12N

SEPARATING FORCE WITH PLUG
MIN. 10N; MAX. 20N

PACKAGING :
900 PCS: ON TAPE AND REEL WITH
AGK 2593 ON A 16 MM BLISTER TAPE
ON REEL OF ϕ 330 MM

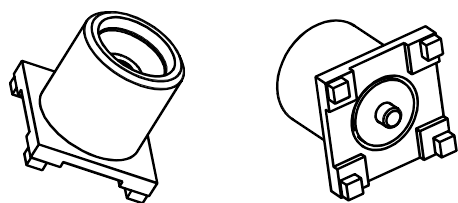
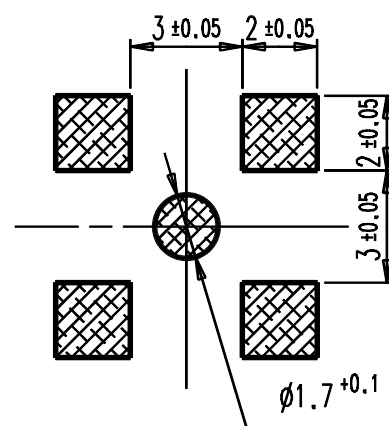


| PART | MATERIAL | FINISH |
|----------------|-----------------|----------------------------------|
| BODY | CuZn39 Pb3 F50 | LAST DIGIT OF CODE ('): 1 = Au |
| CENTRE CONTACT | CuBe2 | 3 = Ni-P+Au |
| INSULATOR | TEFLON (PTFE) | 7 = Ni+Sn |

ELECTRICAL CHARACTERISTICS

FREQUENCY RANGE : UP TO 6 GHz
 IMPEDANCE : 50 OHM
 INSULATION RESISTANCE : 1 GOHM
 WORKING VOLTAGE : 250 V_{eff}/50Hz
 VSWR (DEPENDING OF THE PCB-LAYOUT) : TYP 1.2

SMD-LOETFLAECHEN SOLDERPAD LAYOUT



M/scale 3:1

| | | | | | | | |
|-----------|------|---------------------|----------|-------|-----------------------|---|--|
| | | general tolerance | | | scale: 5:1 | | |
| | | ISO 2768 | | | Assembly instruction: | | |
| | | | mH | | | Stripping dimension: | |
| | | date | | name | | Anbaubuchse p.c.b. mount jack 2017.01.2510.00' | |
| | | 07.01.97 | | Roese | | | |
| EC 024 09 | f | corr. surface | 06.03.09 | Rsc | checked | | |
| 387/03 | e | Socket disalignment | 17.09.03 | Rsc | Norm | | |
| 114/98 | d | flatness addition | 19.02.99 | Rsc | 30075 | | |
| 197/98 | c | Text hinzu | 28.04.98 | I.S. | | Rev. f | |
| 095/97 | b | Blistergurt hinzu | 18.02.97 | Roese | | | |
| 017/97 | a | solder pots | 15.01.97 | Roese | | | |
| nr. | rev. | alteration | date | name | | | |