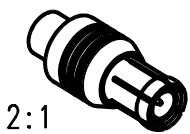
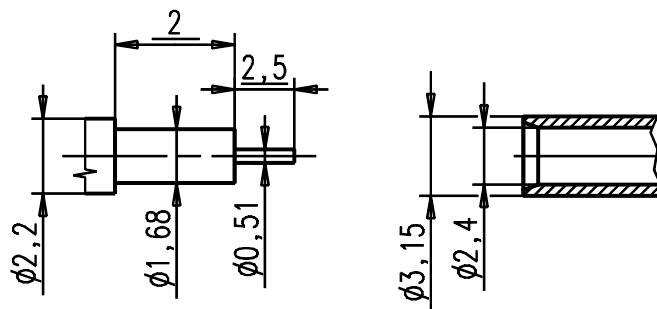


Kabelzuschnitt
Stripping dimension
Semi-Rigid



2:1



1:1

				general tolerance ISO 2768 mH		ISO 2768 -m- 0,5-3: ±0,1 3-6: ±0,1 6-30: ±0,2		scale: 10:1		
								Assembly instruction: M-20 Stripping dimension: K4		
				generate	date	name	Kabelstecker Cable mount plug			
				checked						
				Norm						
				30431						
								1164.01.1410.06'		Rev. a
328/04	a	Ueberarbeitung	15.11.04	Mayer						
nr.	rev.	alteration	date	name						