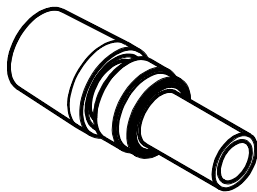
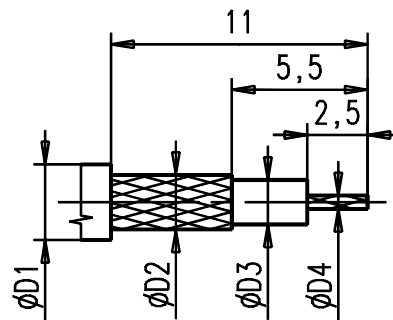


M2:1



Kabelzuschnitt
Stripping dimension



Fuer Kabel /
For cable

Gr.	Type Typ	$\phi D1$ max.	$\phi D2$ max.	$\phi D3$ max.	$\phi D4$ max.	$\phi D5$	$\phi D6$	$\phi D7$	$\phi D8$	Crimp Aussen/out	Crimp Innen/in
1	RG 178 BU;RG 196 AU;	2,10	1,30	0,84	0,30	1,15	1,70	2,50	4,00	3,25	0,70
2	RG 174 BU; RG 188AU; RG 316 U: (C)	2,80	2,24	1,67	0,54	1,70	2,30	3,00	4,00	3,25	0,70
3											
4											
5	RG 316 U-d; K02252d	3,05	2,50	1,55	0,54	1,70	2,30	3,30	4,00	3,25	0,70

IMF-BONNESTOR
SYSTEME GMBH

general tolerance
ISO 2768
mH

scale: 5:1

Assembly instruction: M43
Stripping dimension: K3

nr.	rev.	alteration	date	name
330/00	c	Kabellabelle geae	08.05.00	Sta.
329/96	b	Ueberarbeitet	08.05.00	Sta.
	a		08.05.00	Sta.
				checked
				Norm
				24966



Kabelbuchse
Cable mount jack

11.2310.0''

Rev.
C