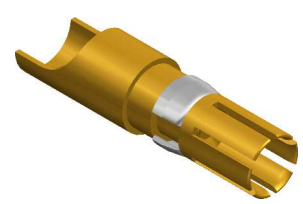


X= Measuring point for plating



M/s 2:1



M/s 1:1

					general tolerance ISO 2768 mH angle: ±5°		scale: 10:1	
					generate 11.08.88 checked 06.07.17 Norm		Max. Kontaktstrom: 40 A Max. Contact current: 40 A	
					date name generate 11.08.88 Grode checked 06.07.17 Pölz		Hochstrombuchse high power insert female	
					EC_095_17 d revised 04.07.17 mcsenki EC_027_12 c revised 13.03.12 lhen b DIN41626 27.07.94 RSc. a revised 11.08.93 I.S.		095.24.2115.40'	
nr. rev. alteration date name							Rev. d	