

Microwave Coaxial Connectors

MICROWAVE COAXIAL CONNECTORS



muRata *Innovator
in Electronics*

Murata
Manufacturing Co., Ltd.

Cat.No.O30E-4

● **Part Numbering** (The structure of the "Global Part Numbers" that have been adopted since June 2001 and the meaning of each code are described herein.)
If you have any questions about details, inquire at your usual Murata sales office or distributor.

Coaxial Connectors (Chip Type Receptacle)

(Global Part Number) **MM** **7329** **-27** **00** **R** **A1**
① ② ③ ④ ⑤ ⑥

① Product ID

Product ID	
MM	Microwave Coaxial Connectors (Chip Type Receptacle)

② Series

Code	Series
3325	BFA Type Straight
3326	BFA Type Right Angle
7329	FSC Type
8430	SWD Type
9329	GSC Type

③ Individual Specification Code (1)

Code	Individual Specification Code (1)
-25	Discrete Terminal
-26	Switch Connector SMD Type
-27	Connector SMD Type

④ Individual Specification Code (2)

Code	Individual Specification Code (2)
00	Serial

⑤ Package Product ID

Code	Package Product ID
B	Bulk
R	Reel

⑥ Package Detail

Code	Package Detail
A1	FSC, SWD, GSC Type 1000pcs. /Reel (ø178mm)
B3	SWD Type, 3000pcs. /Reel (ø330mm)
B4	FSC Type, 4000pcs. /Reel (ø330mm)
B5	GSC Type, 5000pcs. /Reel (ø330mm)

Coaxial Connectors (with Cable)

(Global Part Number) **MX** **FG** **76**
① ② ③ ④ ⑤ ⑥

① Product ID

Product ID	
MX	Coaxial Connectors (with Cable)

② Connector (1)

Code	Connector (1)
FG	FSC Type for 76 Cable
FK	FSC Type for 81 Cable
TK	GSC Type
YH	BFA Type

③ Cable

Code	Cable
62	0.8D, PE, Double Shield Line
63	0.8D, PE, Single Shield Line
75	0.8D, FEP, Double Shield Line
76	0.8D, FEP, Single Shield Line
81	0.4D, FEP, Single Shield Line
88	0.4D, PFA, Single Shield Line, Single Line
92	0.4D, PFA, Single Shield Line, Spiral

④ Connector (2)

Code	Connector (2)
FG	FSC Type for 76 Cable
FK	FSC Type for 81 Cable
TK	GSC Type
YH	BFA Type
XX	None Connector

⑤ Length

Expressed by four figures. The unit is mm. From first to third figures are significant, and the fourth figure expresses the number of zeros which follow the three figures.

Ex.)

Code	Length
5000	500mm = 500 x 10 ⁰
1001	1000mm = 100 x 10 ¹

⑥ Individual Specification Code

Expressed by two figures.

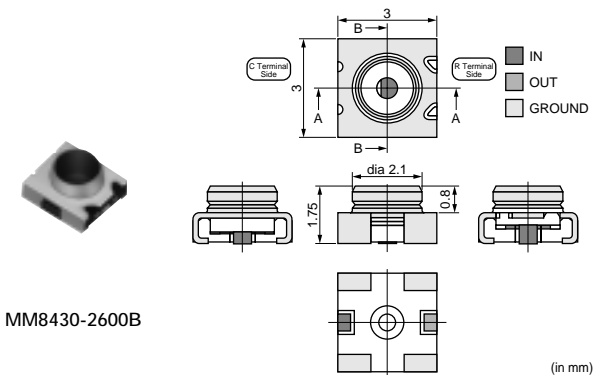
Microwave Coaxial Connectors



Microwave Coaxial Connectors with Switch SMD Type

■ Features

1. The coaxial connector with switch is very useful for characteristic measurement of hand held phone and microwave circuit.
2. It is possible to switch the line connection and disconnection easily by special probe.
3. Small size, low profile. Size 3x3x1.75mm (LxWxH).
4. Excellent characteristic. Low IL 0.2dB max.. V.S.W.R. 1.3 max. Isolation 15dB min. (at DC to 6GHz).
5. Surface mountable and reflow solderable.
6. Tape package available.



■ Applications

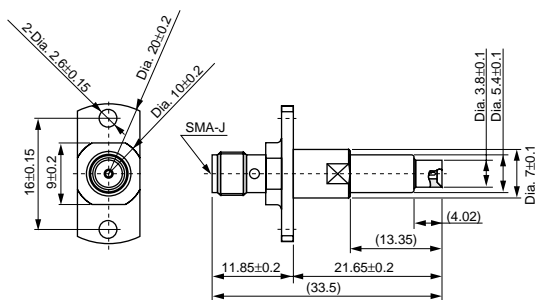
Cellular phone, W-LAN, Other wireless and measurement equipment.

Part Number	Rated Voltage (Vrms)	Contact Resistance (ohm)	Withstand Voltage (Vrms)	Insulation Resistance (M ohm)	Durability (cycles)	Frequency Rating	Temperature Range (degree C)	VSWR	Insertion Loss (On) (dB)	Isolation (Off) (dB)	Inner Electrode (C)	Inner Electrode (R) (material)	Outer Electrode (material)
MM8430-2600B	250 max.	0.05 max.	300 (AC)	500	500	DC to 6GHz	-40 to +90	1.3 max. (DC to 6GHz)	0.1 max. (DC to 3GHz)	20 min. (DC to 3GHz)	Stainless Steel Gold plated	Copper Alloy Gold Plated	Copper Alloy Silver plated

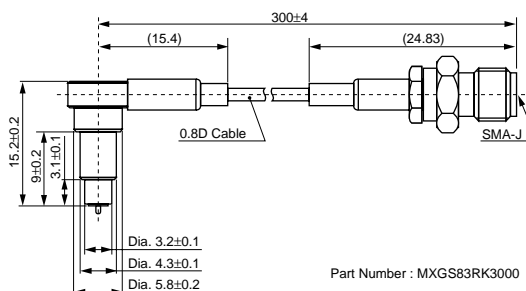
Impedance : 50 ohm

■ Measurement Probe Dimensions

MM126036



MXGS83RK3000



Continued on the following page.

Notice

■ Notice (Storage and Operation Condition)

1. Environment Conditions

(1) This product is designed for use of electrical equipment in the environment (temperature, humidity, atmospheric pressure and etc.) specified in this approval drawing: it may not be used in the following environments or under the following conditions :

- (a) Ambient air containing corrosive gas
(Chlorine gas, Hydrogen sulfide gas, Ammonia gas, Sulfuric acid gas, Nitric oxide gas, etc.)
- (b) Ambient air containing volatile or combustible gas.
- (c) In liquid (water, oil, chemical solution, organic solvents, etc.)
- (d) In environments with a high concentration of

airborne particles.

- (e) In direct sunlight
- (f) Other environments similar to the above conditions.

(2) Contact the manufacturer before using the product in any of the above environments or under any of the above conditions.

2. Storage

Store in manufacturer's package or tightly re-closed box with the following conditions. Use this product within 6 months after receipt. Check the terminal solderability before use, if the product has been stored for more than 6 months.

Temperature : -10 to +40 degree C

Humidity : 15 to 85 % RH

Notice

☐ Continued from the preceding page.

■ Notice (Handling)

1. Usage Condition

- (1) Do not apply electrical voltage greater than specified in the drawing. It might because of degradation or destruction of the product. Even if it endures during a short time, long time qualification is not guaranteed.
- (2) Confirm that there are not any influence to the product's performance which might because by other components which touch with the product.
- (3) Please contact the manufacturer before hand, if the product is to be used in frequently bent position.

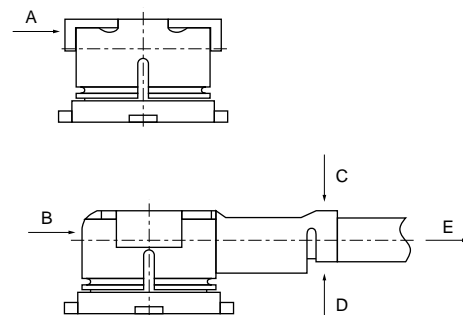
2. Handling

- (1) Do not apply excessive shock or load to subassembly like soldered printed circuit board in case of handling and transporting it.
- (2) Do not try to pull the cable, when a connector with a coaxial cable is handled.
- (3) Disregard with following notes could give mechanical damage and/or poor electrical performance.

3. Handling Instructions

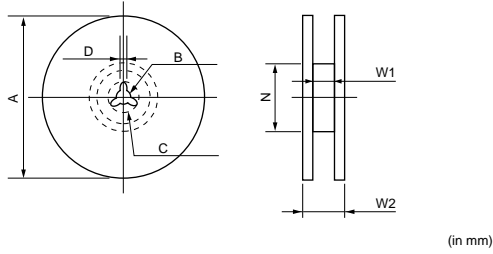
- (1) This cable is just only fit with MM9329-2700B receptacle. Any other receptacle can not be used with this cable.
- (2) Disengagement:
Use tool P/N M22001. Do not try to pull out by the cable, because there is the possibility a wire breaks.
- (3) Do not give a twisted torque to the cable and connector.
- (4) Mechanical stress:
The stress to the connector should be limited as shown the following Figure1.
 - (a) Stress to the housing.
Stress A and B: 4.9N Max.
 - (b) Stress to the outer sleeve.
Stress C: 2.94N Max.
Stress D: 1.96N Max.
 - (c) Cable pull strength.
Stress E: 4.9N Max.

Figure 1. Mechanical stress after engagement



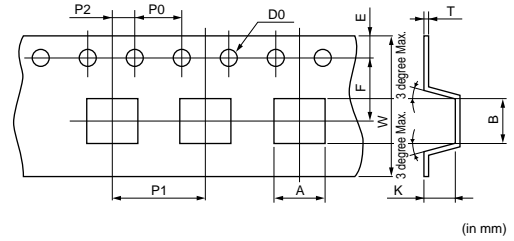
Package

■ Dimensions of Reel



Murata Part Number	A	B	C	D	N (min.)	W1	W2 (max.)
MM9329-2700RA1	178	13	21	2	Dia. 50	13.5	18.5
MM9329-2700RB5	330	13	21	2	Dia. 50	13.5	18.5
TOLERANCE	±2.0	±0.5	±0.8	±0.5	-	±1.5	-

■ Dimensions of Taping



A	B	W	D0	E	F	K
3.8±0.1	3.8±0.1	12±0.2	Dia.1.5 ^{+0.1} ₋₀	1.75±0.1	5.5±0.1	1.25±0.15
P0	P1	P2	T			
4±0.1	8±0.1	2±0.1	0.3±0.05			

■ Minimum Quantity

MM9329-2700RA1: 180 mm dia. reel/1000 pcs.

MM9329-2700RB5: 330 mm dia. reel/5000 pcs.

MM9329-2700B : Bulk /free